

# NEWSLETTER

of the Dorking & District Preservation Society

No. 58

Spring 2011



A company limited by guarantee, reg no 5126366  
Reg charity no 1107459



**THE LEAFY HERALD TO SUMMER**



## The complete picture

We can supply the missing piece of your legal jigsaw.

At Downs we offer solutions that are creative, innovative and delivered by a dedicated team of lawyers who are committed to excellence.

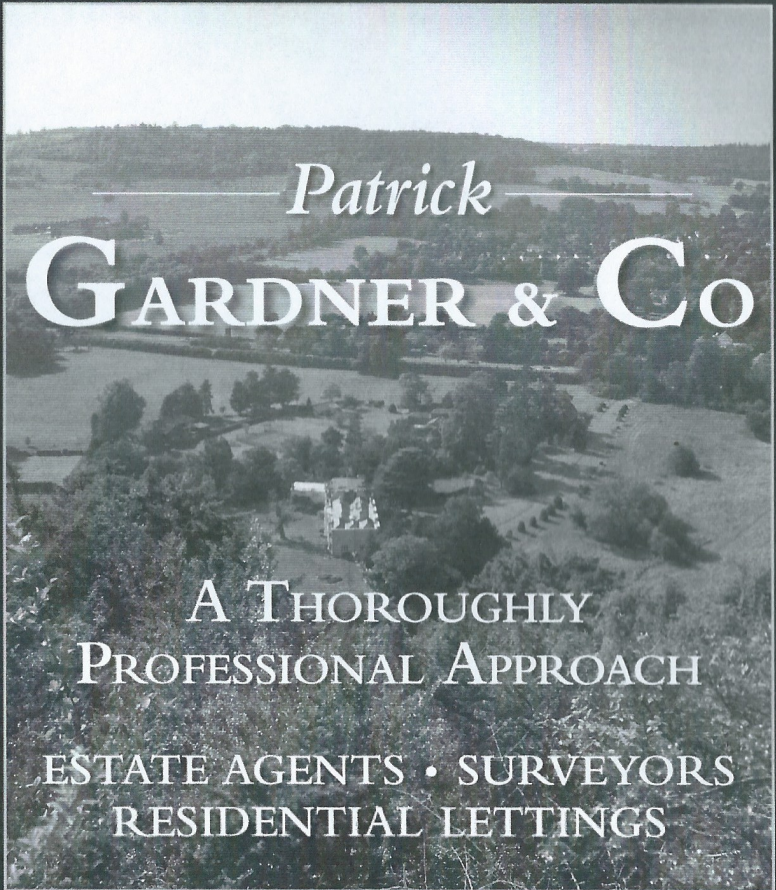
For the complete picture, telephone **01306 880110**.

**156 High Street Dorking  
Surrey RH4 1BQ**

**75 Meadrow Godalming  
Surrey GU7 3HU**



**DOWNNS**  
SOLICITORS & NOTARIES  
[www.downslaw.co.uk](http://www.downslaw.co.uk)



*Patrick*  
**GARDNER & Co**

A THOROUGHLY  
PROFESSIONAL APPROACH

ESTATE AGENTS • SURVEYORS  
RESIDENTIAL LETTINGS

171 High Street, Dorking, Surrey RH4 1AD  
Tel: 01306 877775 Fax: 01306 877780  
email: [dorking@patrickgardner.com](mailto:dorking@patrickgardner.com)

ALSO IN ASHTEAD, LEATHERHEAD  
& BOOKHAM

[www.patrickgardner.com](http://www.patrickgardner.com)



**BRAYESTATES**

Professional Property Consultants

Commercial & Residential

**INVEST IN  
SOME ADVICE**

Lettings & Investments

Property Management

Surveys & Valuations

**01306 740837** [www.brayestates.co.uk](http://www.brayestates.co.uk)

---

## Start to Finish<sup>gb Ltd</sup>

A tailor-made design and construction service

Whatever you want,  
we will co-ordinate and  
manage to the level  
and extent that you  
may require

- Design
- Planning Applications
- Building Regulations
- Project Management
- Building Management
- Co-ordinating  
Contractors through  
to completion

Contact Graham Clark to arrange a meeting

**Tel: 01306 882230**

email [starttofinish.gb@hotmail.co.uk](mailto:starttofinish.gb@hotmail.co.uk) Website: [www.starttofinish.gb.com](http://www.starttofinish.gb.com)

# NEWSLETTER

of the Dorking & District Preservation Society

## Contents

Editorial.....	5
Chairman's Message.....	8
Planning Report.....	10
Annual Reports .....	11
News & Views .....	14
The Museum Photo Library .....	15
Local History Books .....	19
The Dorking Museum .....	20
Deepdene Heritage Trail Update.....	22
On the roofs of the world .....	24
Who lived here before us .....	25
Off your plate, onto the fields .....	26
Get around the Green Belt of Dorking.....	28



NEWSLETTER 58: Spring 2011  
Free to members

Published each April, July and October

Last date for copy to be with the Editor: **5 March, 5 June, 5 September.**

Warning of liability: While every effort has been taken to ensure that all details are correct, the publishers cannot accept responsibility for the accuracy of information in reviews or features, nor for the consequences of any action taken as a result of this information. The views of the contributors do not necessarily reflect those of the publishers.

The Editor welcomes letters and items for publication from members and other readers. All unattributed material is contributed by the Editor.

**President:**

Adrian White, CBE., DL

**Chairman:**

Derek Rowbotham  
25 Highacre  
Dorking RH4 3BF  
Telephone: 01306-887445

**Minute Secretary:**

Position Vacant

**Editor:**

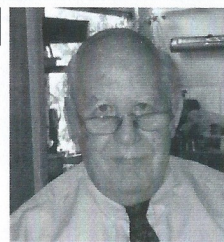
Hank Etheridge  
18 The Orchard  
Ashurst Drive, Boxhill Road  
Tadworth KT20 7LP  
Telephone: 01737-844379

**Membership/Subscriptions:**

Jean Pearson  
Osbrooks Lodge, Horsham Road  
Capel RH5 5JH  
Telephone: 01306-711043

[www.ddps.org.uk](http://www.ddps.org.uk)

## editorial



I can't begin this editorial without commenting about how shocked I was to hear of Martin Wedgwood's passing. He was my Chairman and colleague but, most of all, he was my friend. In the military there is the term 'MIA' – Missing In Action – and, in some way, that is how I think of him. His actions on behalf of the Society pervade my own attitudes about it and will influence me for ever. I miss his guidance, his warmth and his impish sense of humour. As long as I remember him, he is only missing.

It has been a hectic six months since the last newsletter: the Library; supermarkets; new discussions about the Local Development Framework and the Society's concentration on getting the museum up and running sooner rather than later, about which you will be able to read in Kathy Atherton's article. We also have, for the first time, held an election for a new chairman in which you have responded in an overwhelming manner – over 60% of you have voted at the time of writing (mid-March). By the time you read this you will know whom you have elected.

I would like to say something about publicity for Dorking. I was mortified when I watched an episode of 'Have I Got News For You' which sent up our town big time. It was about the wretched albino squirrel and the silly *McGonnigal* type poem about the beast published in the local Press. The Society would like to ask the Dorking

Advertiser to think before they get involved in such stories in future. It made the town a laughing stock nationwide.

In this issue, we have articles about the restoration of the Hope Mausoleum and the proposed organised walk from Deepdene to Brockham via Betchworth Castle's romantic ruins. It will have descriptive panels at various points along the trail outlining the significance of where the walkers are standing.

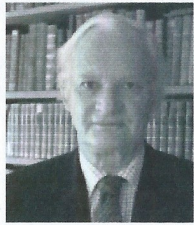
I asked Mole Valley's Waste Management chap to write something about the Food Waste scheme. As he was up to his ears in paperwork, I asked Adam Jolyon to go along and interview him and get the details about what happens to the food waste and its benefits. His article appears on page 26.

I also commissioned John Gilliard, our resident eco warrior to write about the large eco exhibition held at the O<sub>2</sub> in London in March. I am a great fan of The Discovery Channel and I was motivated to ask John to write the article because of a film I saw on the channel about houses of the future which will generate their own power, collect and recycle rainwater, install heat pumps and roof with grass or sedum or even grow their own vegetables. Windows will have circuit-board type installations for photovoltaic usage and the majority of the building fabric will be from recycled plastic bottles, a thin sheet of which can hold up the weight of a car.

I remember saying a couple of years back that the newsletter is YOUR magazine and I would welcome articles from you. I am sure that there are budding authors out there.

*Hank Etheridge, Editor*

## Obituary



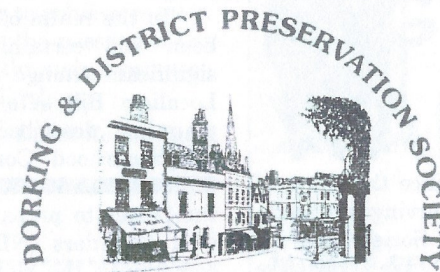
### Sir Martin Wedgwood 1933 – 2010

Martin Wedgwood joined the Dorking & District preservation Society in the nineteen eighties as a member and was subsequently invited to join the Management Committee becoming the Hon Treasurer, a position to which he was particularly well suited since he was at that time working in the City of London as a stockbroker. He was much involved in the administration of the various bequests to the Society including latterly the large Owen Russ bequest in favour of the Museum. This bequest was to continue to be an ongoing concern to him throughout his time as Chairman of the Committee, a position he assumed from 1999 until his untimely death in 2010.

No-one could have been better qualified to be involved in Dorking and its development than Martin Wedgwood, who lived as a young man in Dorking and had an abiding affection for the town and its environs. Related through family connections to Dr Ralph Vaughan Williams, the composer and founder of the Leith Hill Festival, Martin lived for a time in Leith Hill Place. On becoming Chairman in 1999, a position which he held for 11 eventful years, he was passionate in his dedication to ensuring that the character of the town and, indeed, the surrounding villages and countryside, were protected from the incursions of inappropriate developments, both architectural as well as conservational aspects. His interest and involvement in the Museum can be clearly illustrated in the official opening of the Museum extension in June 2001, which coincided with the Museum's 25<sup>th</sup> anniversary, a celebration which he planned and at which he officiated. On his death, he most generously left a bequest to the Museum and also a part of the Jasper collection of the Wedgwood family. Many of the other activities of the Society, including the important Planning Committee and Heritage Open Days were actively encouraged and supported by him and he represented the Society and the community as an active member of the Town Centre Forum. Indeed, his breadth of interest in both architectural matters as well as the environment ensured that his influence and views were widely respected.

On a personal basis, I was extremely fortunate in working closely with Martin, both as Vice Chairman, during my time as Chairman of the Society, and subsequently when he was Chairman. Of his many attributes he will always be remembered for his approachability and faculty of working harmoniously with both organisations and individuals alike. In summary, he was a charming colleague and a great benefactor of Dorking, and we are all the poorer for his passing.

*Barry Collins*



Established in 1929

The Annual General Meeting of the Society  
Will take place on  
Friday, April 20, 2011 at 7.30pm  
In the  
Christian Centre  
St Martin's Churchyard  
Dorking

After the formal meeting there will be  
An interval for tea and biscuits

Followed by an illustrated talk by

**Kenneth Bare**

On

*The Work of the Surrey Hills AONB*

## chairman's message



It is not a long time since the death of Sir Martin, our long-serving and dedicated Chairman of the Society, but my own experience and the collective experience of the trustees and officers of the Society has been truly memorable. It has been our desire to ensure the momentum of the Society has been maintained, the projects like the museum kept on track and, if possible, seizing the opportunity to invite the participation of the members in a genuine democratic event to elect the new Chairman. I reasoned that my own tenure of this office should be limited to the period until April in order to complete a hand-over by the time of the AGM, not pre-determined by the past. Well, I can say that two nominations have been received to hold this office and voting papers have been sent out to all members. I expect that by the time you read this message we will have a newly elected Chairman of the Society.

The programme to renovate and improve the museum has proceeded to the extent that plans are now in hand to carry out a comprehensive scheme of refurbishment and renewal. We are poised to submit an application for planning permission to secure approval for the whole scheme which will have been judged to provide an effective and efficient museum building, enhancing the character of the conservation area and generally adding to an important and attractive part of the centre of the town. In this we are grateful recipients of much voluntary guidance and an amazing amount of help which ensures

costs are kept within our limited budget.

In the realm of planning there has been and certainly will be further significant change in the system. The Localism Bill sets out a new tier of planning described in the Bill as Neighbourhood Community Planning. This will confer on defined local areas the power to prepare plans (NDPs) as well as orders (NDOs) and gives the community the right to build (CrTB). The Plan or Order must be based on evidence and consultation and has to set out policies in relation to the development and use of land in the defined area. They have to be designed to bring forward sustainable development and growth. Specific developments or types of development can be set out to allow automatic planning permission to be given in the form of a Neighbourhood Development Order. The Local Planning Authority (LPA) has a duty to cooperate and the Plan/Order is part of the Local Development Framework (LDF). Overall conformity with the LDF is certified by independent examination which precedes confirmation by at least a positive 50% result in a community referendum. If this can be achieved, the Plan/Order is then adopted by the LPA.

This framework of local planning will extend right across a district and will depend on there being, in towns and villages, skilled and dedicated voluntary input to put in place the foundations of an area definition and provide the research needed to define the neighbourhood and produce the objective policies. Some areas will get off the ground more quickly than others and some will probably never reach the standard envisaged in the Act. There is no doubt that in Mole Valley there will be a strong variety of responses resulting in a diverse pattern of actual localism. I'm in no doubt that the

Society will be called on to provide expertise, but this will need funding and dedicated people to achieve results. We will be looking to the passage of the Bill, which will be through committee stage at the end of March.

*Derek Rowbotham*

### Volunteer Drivers Needed

#### Can You Help?

The Dorking Good Neighbours (DGN) is a dedicated group of about 22 local car-owning drivers who provide residents in our community with transport to medical appointments, accepting only donations for the journey. We now wish to increase our driver numbers.

Journeys fall generally into two categories: firstly to local surgeries such as Medwyns, New House (South St) or North Holmwood and, secondly, to local and nearby hospitals such as Dorking, East Surrey, Crawley or Epsom (reimbursement for fuel costs, etc. can be made).

The DGN service works flexibly and fits in with any commitment and holidays. Requests are taken by our Transport Officers and arrangements with drivers are usually made well in advance.

If your lifestyle allows you to spare a few hours each fortnight to help neighbours in our community, please consider joining us.

For more details,  
please contact

Bruce Ottaway

# URGENTLY WANTED

## MINUTE SECRETARY

If you are a retired lady or gentleman or self-employed, with some experience of working with Board Directors or Senior Executives, computer literate and have a desire to help in the work of the DDPS, contact Derek Rowbotham at the number below.

## COUNTRYSIDE OFFICER

If you are passionate about the beautiful countryside around Dorking, and would like to make a difference, this is the job for you.

## ROADS & TRANSPORT OFFICER

An important part of the Society's remit, attending meetings about Highways, Railroads and Airports, and reporting back to the Council.

For more details,  
please contact

Derek Rowbotham  
on: 01306 887445

## planning report

Before I get into what my committee and I have been dealing with since last Fall, there are some loose ends from our report in that issue that need comment. As many of you will know, the development by Linden Homes at Marley Mead, off Ridgeway Road, turned down by MVDC Councillors, went to Appeal and was allowed. The surrounding Residents' Associations and the Society are in discussions to alleviate disruption which will be caused by contractor's trucks. The Society still feels that this development intrudes into the 'Green Belt' surrounding Dorking and could quite well encourage further encroachment.

The two bungalows proposed for Noy's Yard in Brockham, which we commented upon at length and were subsequently modified, have been approved. About the same time, we also commented upon an application to convert a small, vintage shop in Westcott into a one-bedroom apartment. This has also been approved after modifications. Also, the exciting development at Wonham Mill has now been given the 'go-ahead'. The flooding problem we were concerned about has been neatly solved by allowing water to flow through tunnels under the buildings.

Although we have looked at about 160 applications since last September, most of them have been for various extensions. Some of them we have commented upon for odds and ends of technical reasons. One of the exceptions to these was yet another application for the two 'WAGS' houses proposed for Camilla Drive in

Westhumble. Again it was refused by MVDC and again we sent a strongly worded letter to the Inspectorate saying that the design was little different from the first application, the buildings were still crude pastiches and the enormous garages the sizes of small bungalows had been retained. The Appeal was dismissed.

One of the highlights of our Planning meetings was a proposal for a wonderful, Scandinavian design extensions and link at a property in Chichester Road. Previous to the Application, the owner and the architect came to one of our Wednesday meetings to show us the plans and elevations with which we were impressed. In our letter to Planning, we said the architecture was so good it must be accepted. It was, and is currently being constructed. We shall recommend it for the Best Development Competition next year.

Generally, most of our letters have been niggles about lack of information or incomplete drawings. Most of them have been settled to our satisfaction, apart from one which we still don't think will work. The Application was for a new window at Sondes Farm that had to match the existing ones which have a red brick, long and short quoin surround. The submitted drawing only showed the brick surround on the right hand side of the new window and only on the left hand side of the existing door. When we put a scale rule over the drawing it was obvious that the proposed window should move to the right to allow the brick surround not to butt up to the existing brick surround on the door. We spoke with the Case Officer who, in turn, spoke to

the applicant, who promised new drawings, which we are not sure arrived. After two or three telephone calls to the Case Officer, she told us that the application had been approved but giving leeway for the window to be moved if necessary. We shall visit the site in a few weeks' time and photograph.

We looked at the Application for the enlargement of Waitrose in South Street which came onto our desk in a big box. Although I was not too happy with the proposed elevation on South Street, after reading the Design and Access Statement I understood the reason for the somewhat ungainly design: it is to fit into the street scene as a series of different shop fronts to be in keeping with shops alongside them. I agreed that having a wide glass frontage would be at odds with the existing street scene. However, the rear of the proposed scheme is excellent and very contemporary. The only glass-fronted section on South Street would be on the corner of Junction Road, replacing the original Waterstone's shop.

The Society is in favour of this enlargement and will recommend it. However, if traffic and other problems can be ironed out with a Sainsbury application we shall not be adverse to a supermarket in the High Street. It's a big 'IF'. Waitrose will do fine for those among us who are reasonably well-heeled, but some thought must be given to those on lower budgets. We are definitely opposed to the Morrison and Lidl schemes.

*Hank Etheridge  
Planning Chairman*

## Annual reports

### CHAIRMAN

This year for the Society has been notable for changes that have been introduced in the affairs of the Society. The very sad and unexpected death of our Chairman, Sir Martin Wedgwood, was sudden and a great loss to us all. Suffice to say that he has left a clear and distinct imprint on the character of the Society, and his work on updating the registration of the charity in 2004 and separately creating a company limited by guarantee modernised the constitution of the Society. A separate commendation appears in the Newsletter.

As a consequence, urgent attention had to be given to ensure the Society's affairs and the commitment to its work continued without disruption. My aim has been to ensure that this successful operation proceeded uninterrupted and to ensure that as far as possible the work of the Society continued and that the Society is handed over to the new elected Chair in good order. I believe this will be achieved. I have been amply supported by the Trustees of the Society in this endeavour and there has been outstanding work carried out by the volunteer officers of the Society in all programmes, including the Museum, the Local History Group and the other services under the umbrella of the Society. I particularly wish to mention all those who have done so much to advance the heavy work involving the Museum Committee and the Joint Development Committee.

*Derek Rowbotham*

## MEMBERSHIP

During this last year, the membership has dropped, mainly through the passing of members who have been loyal to preserving the District and supportive of the Society. It is my intention to increase the membership during this next year, to encourage the younger residents of Dorking to take an interest and even a more active participation in our heritage. We need younger people to take over the reins of the Society in order to keep it going for many years to come.

*Jean Pearson*

## PLANNING

My committee and I have looked at around 500 Applications and have responded to 27 with reasonable outcomes to most of them. The confusion within Planning has reduced the number of new builds we usually deal with but some of the extensions we have looked at have been challenging. We have responded to most of the Listed buildings we have seen, plus some in Conservation areas.

*Hank Etheridge, Chairman, Planning*

## MUSEUM

The greater part of the Museum committee's efforts this year has been in forward planning. Over the course of 2010/11, the Museum has remained closed whilst attempts were made to secure sufficient monies to build a new Museum to the design of last year's competition. Extensive research and business planning led the team to the conclusions that the scheme was not viable. Instead, plans have now been finalised for a full refurbishment of the Museum buildings. The Application for planning

permission is about to be submitted and it is anticipated that work will begin in early summer. During this period of closure considerable work has been undertaken in increasing the Museum's profile locally via attendance at local events and through press coverage in the hope of attracting more volunteers and donations. There has been an increase in fundraising through events and the sale of merchandise. A thorough assessment of the artefacts collection is also underway, as is digitisation of the Museum's photo collections. And the Museum continues to work closely with other local organisations on history-related events as well as advising widely on matters of Dorking's history.

*Kathy Atherton*

## FOOTPATHS

During the past 12 months I have been walking the Rights of Way of Dorking and District, and reporting to Surrey County Council Rights of Way Officer any footpaths, way-marks, finger posts and stiles that are obstructed, broken or missing, so that they can rectify them.

*Francis Bennett, Footpaths Officer*

## LOCAL HISTORY GROUP

The Group has had a very satisfactory year. Membership and income have been steady. In fact, the group finished the year with a small increase in funds. Our sales of publications increased and compensated for expenditure on volumes for our photographic scanning project. The programme of monthly speakers and visits have been very well received, plus a very successful summer

outing. Many enquiries concerning Dorking have been received, not only from this country but many coming from abroad. A project is underway to increase our membership by 20% in the coming year. Our annual publication 'Dorking History' was published in October.

*Peter Camp, Chairman,  
Dorking Local History Group*



*"It looks like the Preservation Society's having another election."*

## News from the Dorking Local History Group

Our regular monthly series of meetings and outings have been well attended and have not been interrupted too badly by the winter weather.

Our treasurer, Bruce Galley, is moving out of the area at the end of March. We would therefore like to fill this vacancy, so anyone interested please contact Peter Camp, Chairman, on 01306 888123.

Our new programme of talks and walks is as follows:

### May 3 Rebuilding Ockley Windmill

*Peter James*

### Jun. 7 Life & Works of Lady Somerset

*Ros Black*

### Jul. 5 Thomas Hope and the Deepdene – a lost landscape

*Alexander Bagnall*

### Aug. 2 Walk & Talk: East Horsley and the Lovelace Buildings

Meet 6.30pm at Duke of Wellington PH, East Horsley  
*Jackie Malyon*

### Sep. 6 Policing the Victorian Countryside of Surrey

*Bob Bartlett*

### Oct. 4 East Surrey Underground

*Peter Burgess*

Summer Outing to Standstead Park, Rowlands Castle, Hampshire. Further details to be announced later

All talks start at 7.30pm unless stated otherwise. Meetings take place at the Friends' Meeting House, Butter Hill, Dorking.

## If you are interested in Local History – why not join the DORKING LOCAL HISTORY GROUP

Individual Membership costs only £8 per annum (£10 for a couple)

This gives you the following:

- ❖ Free monthly meetings on local topics, held in Central Dorking
- ❖ Annual 'Dorking History' journal
- ❖ Newsletters ... Outings ... and more!

For an Application Form, please contact [petercamp123@btinternet.com](mailto:petercamp123@btinternet.com) or telephone: 01306 888123, leaving your name, address and telephone number





Established in 1929

## NEWS & VIEWS



### Your new Chairman

Chris Heapes was your choice in an election held for a new Chairman. Out of 273 votes, he gained 178. Standing against him was Jean Pearson who won 92 votes. It was the first time (as far as this writer knows) that a full democratic election has been held for a Chairman and a large, 60.8%, of you responded. Chris will take up his post at the AGM on Friday, April 30.

### SCC's Cuts and Rights of Way

Our Footpath's Officer, Francis Bennett, has been in constant touch

with Clare Saunders, Rights of Way Officer for East Surrey, to learn if cuts to the County's finances will affect the upkeep of these well-trod paths. Clare has informed Francis that a Public Value Review is being carried out by the Countryside Group, and that might well impact on countryside access. This review is ongoing, and Clare has promised to let Francis (and us) know as soon as final decisions are made.

### The Museum

An Application has now been made to Mole Valley for the restoration plans for the Museum, this after consultation with Peter Mills, MVDC's Heritage and Conservation Officer. Patrick Amos, the architect, has supplied elevations and plans to Hank Etheridge, who will be preparing a watercolour illustration for the cover of the new museum leaflet. Hank said that the only thing which slightly bothered him was Peter Mill's choice of colour for the proposed render for the building – an unattractive grey. "I shall have to put some brightly clad people in the foreground", he told me.

## THE MUSEUM PHOTO LIBRARY

Here is just a tiny portion of the Museum's Photo Library which is currently being digitised. Unfortunately, the pictures will not be available to researchers and the general public until the museum re-opens early next year – or earlier if all goes smoothly with the refurbishment. My thanks to Yvonne Durell, the Museum's archivist, for providing the disc.





1



2



3



**Previous page:** Mill Lane, Dorking

1. Fireman's wedding at Betchworth church
2. Dan Mariner, shepherd at Box Hill Farm
3. Pear Tree Cottage, Dene Street
4. Lord William Beresford VC with his son at The Deepdene

5. The Jolly Butchers, Dene Street

6. Abinger Hall



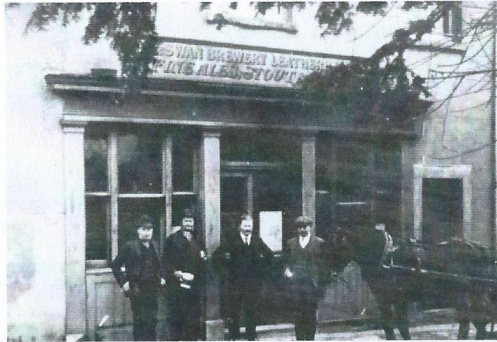
4



5



6



- 7. *The Evening Star* in Mill Lane c. 1905
- 8. Mrs Druce's female choir, Leith Hill Festival c. 1905
- 9. *Mill Lane* 1907
- 10. *Coe's Watercress cart* c. 1910

7



8



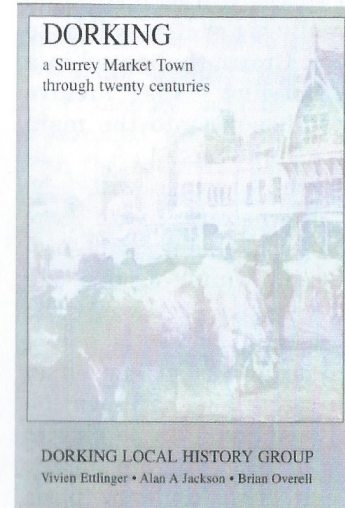
9



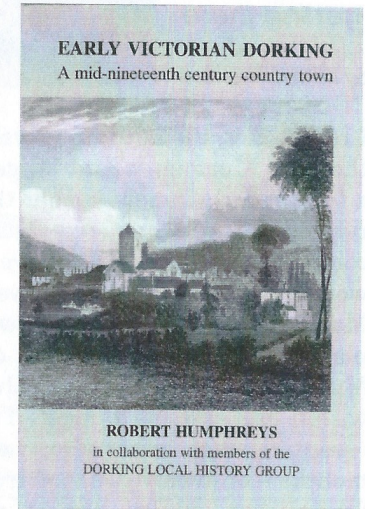
10

# Local history books

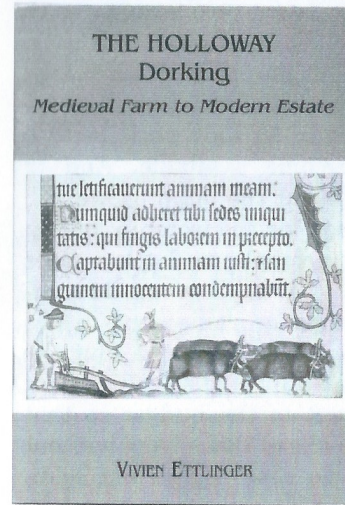
Published by the Dorking Local History Group



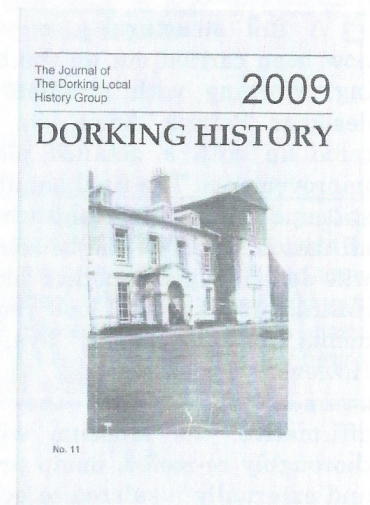
£5.00



£5.00



£5.40



£2.00

Send cheque, plus £1.00 P+P To: Local History Group, The Museum  
62 West Street, Dorking RH4 1BS

The  
Dorking  
Museum  
We're  
getting there

by Kathy Atherton



I reported in the autumn newsletter that the Museum would be getting a total refurbishment rather than a rebuild. Since then the Museum committee and the DDPS have been working closely with developer Mark Eshelby to come up with a plan that satisfies the needs of the Museum but which can be achieved within our existing budget. This is essential since, otherwise, we face months – or even years – of arduous fundraising whilst the Museum remains closed.

A full structural survey has now been carried out on the building. Working with architect and designer Patrick Amos, we have come up with a detailed plan of improvements. The final details are still under discussion, and whether all that is hoped for can be achieved will depend upon whether bidding contractors can fulfil our requirements for the money available. However, assuming that the answers to the caveats above are affirmative, the Museum will be thoroughly re-roofed, damp proofed and externally insulated to achieve both a dry environment with a more constant temperature which will be beneficial to the exhibits, and a

more pleasing exterior. A new entrance is planned, nearer to West Street, with a welcoming lobby, internal toilet facilities and a small shop/coffee area. The two-room exhibition spaces will be opened up - but the really big change will be to the archives. Currently housed in a separate building, the archive collection will move into the main Museum building. A library/research room will be available downstairs, with the archive material being kept upstairs. (A 'dumb waiter' system will bring heavy material down.) The archive collection, which is a real treasure, has long been housed in unsuitable conditions, so it will be particularly satisfying to be able to rectify this at last. The old library building can then undergo basic maintenance, enabling it to serve as storage for reserve collections, with a workshop downstairs.

That is the plan. There may have to be compromise, with some items having to wait until further monies become available. And in order to fit out the building we will have to look for sponsorship: health and safety compliant display cases will need to replace aged ones, whilst computer equipment in the archive is sorely outdated. But the key is that the basic refurbishment will be kept to the budget so that we can go ahead this spring without the need to raise significant additional sums.

Agreeing the plan is only the beginning. Whilst the contractors are at work a large planning task

confronts us. Work has begun on sorting out the exhibits and assessing their relevance and quality, so that conservation or repair work can be undertaken. Following on from that, a layout for the display space has to be devised, display cases and lighting must be planned. New display panels need to be researched and written. Similarly with the archives: use of space will have to be assessed and racking or shelving ordered. We hope that the contractors will be out of the building by early autumn, but it is anticipated that returning all the exhibits to the building and fitting it out will take some time after that.

That being said, we are gearing up to get the Museum 'team' back together again to start stewarding by the end of the year. So bear it in mind, register your interest if you have not stewarded before but would like to, or if you would like to be involved in the preparations. And if you would like to be updated on progress on this exciting project, make sure you get yourself on our mailing list.

For further information, please contact me, Kathy Atherton, on 01306 743752 or visit our website: [www.dorkingmuseum.com](http://www.dorkingmuseum.com).

## DONATION FORM

**DORKING & DISTRICT PRESERVATION SOCIETY**

I want to help refurbish and refit the Dorking Museum and Heritage Centre.

Please find enclosed a donation of

£.....

Name.....

Address.....

.....

.....

.....Post Code.....

*Please make your cheque payable to:  
DDPS Museum Reconstruction Fund  
Send to: Alan Loryman, Dorking Museum,  
62 West St, Dorking RH4 1BS*

If you would like to receive more information about other ways to help, or become a volunteer, please tick box

e-mail address

Telephone Number:

I am a UK taxpayer currently paying income tax or Capital Gains tax that is at least equal to the tax deducted from my donation. I should like the Dorking & District Preservation Society to claim back the tax on this gift and any future gifts until further notice.

Signature

Date

If you would like a receipt, tick here

Registered Charity No. 1107459 Trustees: The Council of the Dorking & District Preservation Society

## Hope Springs Eternal: Deepdene Heritage Trail – Up-date

By Samantha Johnson

Regular readers will be aware of the Council's recent efforts to undertake restoration work to the lost landscape of Thomas Hope, a figure of international significance as a designer and collector in the early 19<sup>th</sup> century who lived at Deepdene House, demolished in 1969 and now the headquarters of Kuoni.

Clearance work has continued on land under ownership of the council, to take the landscape back to the parkland setting of Hope's time. Recent felling works have been concentrated at Betchworth Park where secondary scrub woodland has taken over an area which was, until the 1950's, open grassland as shown in the photograph below.

*Betchworth Park facing Ladygate Road circa 1910*



Further activity has also been taking place to raise funds for the restoration of the Hope Mausoleum, and thanks to the fantastic efforts of the Mausolea and Monuments Trust, nearly £50,000 has been raised so far.

Mole Valley District Council, spurred on by the momentum behind the project and the interest that has been generated locally and further afield, is now in the process of investigating an exciting opportunity to create a family-friendly trail from Dorking to Brockham taking in many of the remnants of the Deepdene Estate.

The aim of the project is to restore a significant part of Dorking's history, enabling the public to learn about and experience a wonderful hidden local landscape. It would also involve the repair of historic features including the reconstruction of the Hope Mausoleum and could include structures in the Deepdene Gardens including an embattled tower, a grotto, an icehouse and a castellated archway, as well as the stabilisation of Betchworth Castle and its terrace. The route will eventually be



*Opening up the view*

animated, with high quality interpretation boards at key sites along the trail, and key parts of the trail will be fully accessible.

Some highlights of the walk would include dramatic views from Deepdene Terrace to the south towards Chart Park and north down to the restored dell, the heart of Thomas Hope's ornamental gardens – an example of the transition from geometric to picturesque garden design. Further along the trail, visitors would have the opportunity to see the final major addition to the estate; Betchworth Castle, which at one time was a medieval, fortified manor house and now features as a romantic ruin in the landscape.

In addition to the landscape and heritage improvements, the project will provide opportunities for the community to get involved and the trail will become an educational resource for children and adults alike. As part of the project, the newly refurbished Dorking Museum would be used as a 'Hub' and a place to find out more about the history of the estate and help to co-ordinate and deliver educational activities taking the project into the community.

MVDC has now had pre-application discussions with the Heritage Lottery Fund, and the proposals were met with enthusiasm. The next steps will involve discussions with partners and land-owners to work up the project and



*The Mausoleum slowly being revealed*

submit a 'Round One' bid, hopefully by August 2011. If this bid is successful, MVDC will be awarded funds to undertake further surveys and reports necessary to support a 'Round Two' bid for a grant to carry out the restoration.

The working group is also in the process of developing a website to enable local people to keep up-to-date with the progress of the HLF bid, and the ongoing restoration work.

***If you would like further information or to be involved, please contact:***

*Alexander Bagnall, Tree & Countryside Officer, Mole Valley District Council, Telephone: 01306 879285 or Email: alexander.bagnall@molevalley.gov.uk.*

**Donations towards the repair of the Mausoleum can be made at:**  
[www.justgiving.com/HopeSpringsEternal](http://www.justgiving.com/HopeSpringsEternal)

On the roofs of the world  
and through a glass,  
warmly



By John Gilliard

Commissioned by the editor, I visited the 'eco-build' exhibition in the ExCel Centre close to the O<sub>2</sub> Dome in London. It is a vast building housing over 1,000 exhibitors. My last visit to the eco-build was four years ago, so it was interesting to see the many advances that have been made in that time.

There were dozens of companies supplying solar panels. This technology has advanced and become more efficient. The latest innovation is the integrated solar roof which, of course, looks much better. Particularly impressive was the ZED roof with its range of interlocking solar tiles. Also now available are the much thinner and lighter Flexible Solar Panels that could, for instance, be put on multiple storey car parks to provide not only lighting, but maybe also used to charge future electric cars.

CHP (combined heat and power) has been around in the industry for quite a while, but there are now units available for the domestic market. CHP works by converting gas – or bio-diesel, plant oil, LPG, etc. into heat plus electricity. Since gas costs 5p a unit and electricity 12p a unit, there are large cost advantages. On top of that, the CHP efficiency of fuel use is 75% compared to 40% for electricity – these figures based on the formula: losses at source+losses in transmission. CHPs

are available (at a cost) from various suppliers, but Eon's CHP is a very impressive piece of kit which is made in Germany. It utilises a fuel cell which converts gas to electricity chemically with water as a by-product, makes no noise and can be used with LPG. For even greater efficiency, combine CHP with a heat pump.

---

**Interesting statistic:**

**If 50% of UK households use CHP by 2025, the combined output would be equal to all the UK nuclear power stations. If 2m households use CHP, this would save 2GW, the output of two Sizewell Bs.**

---

**Other technologies that impressed me**

**Histoglass** is a company who produce thin double glazing for period and listed properties. It has surprisingly good 'u' values. They can produce the glass using the old production techniques resulting in glass which looks old, with all its imperfections.

**Bamboohome** is a company producing bamboo products, including flooring, decking, cladding and laminated joists. Bamboo is the fastest growing plant in the world and absorbs more CO<sub>2</sub> than any other plant – pretty eco-friendly I would say!

Products such as Heat Pumps, Heat Recovery and Wood Burners were plentiful. There were also a lot of wood construction techniques. Wood, of course, is very eco friendly and an efficient insulator. Window efficiency has improved. Exhibiting was a German company producing triple glazed windows with a 'u' value of 0,6 – three times better than the average UK double glazed window.

**Final thoughts**

Not all of the companies at the exhibition were energy efficient. I noticed one company displaying aluminium doors made to look like wood. I asked the rep., "How eco friendly are they?". The man

just stared at me. I asked, "What is the 'u' value? After all, this is an eco exhibition". He went and asked his boss who said it was 1.7. As this compares with the British standard for a good front door of 0.6, this was obviously rubbish.

Unfortunately, I saw no companies producing batteries, which I think is an important technology. Overall, an interesting exhibition. Technology is improving incrementally, but there appeared to be no fantastic breakthroughs. This is a shame, because eco-technology is becoming increasingly important in all our lives.

---

*Wearing my 'Planning' hat, I increasingly find that the general public are confused about whether or not they can install solar panels without planning permission. Unless you live in a listed building, in a conservation area, or are an industrial or agricultural building, no planning permission is usually required. Even in a conservation area, it is likely that commercial premises may get planning permission. Peter Mills, MVDCs Conservation and Heritage Office, told me that the situation regarding solar panels is not yet absolutely defined, so each case must be judged on an individual basis.*

*Double-glazing on Listed buildings can be achieved but, again, each case is looked at on an individual basis. However, aluminium doors with a 'wood effect' look would definitely be a No, No. Editor.*

## Who lived here before us?

Thanks to the proposed Waitrose revamp, I was fortunate to get a look at the Archaeological Scheme of works by the Surrey Archaeological Unit. In it was a comprehensive review of previous finds in the town which conjectured who lived here as far back as the Mesolithic, through to the Celtic Iron Age Atrebrates, the Romans and onto the Saxons and the Draconian Norman occupation.

At the western end of the present Dorking, were tribes of hunter-gatherers and later, in the Bronze Age, people constructed a 'Bowl Barrow' situation in Glory Woods which is now a Scheduled Ancient Monument (No. 20171).

In 43AD, the Emperor Claudius invaded and a significant Roman presence has been identified in and around West and South Streets, presumably because of Stane Street, the road built by the Romans connecting London to Chichester.

In 410, the Romans left and, soon afterwards, the Saxons were invited in to protect the south coast from raiders. Eventually, they took over the South East and, later still, one Deorc and his Ingas (kin) set themselves up at the eastern end of the town. Strangely, very few remains of them have been excavated, although Deorcingas was a Saxon town recorded in Domesday.

In the Summer edition I shall bring the story up to date.

*Aethelric*

## Off your plate - onto the fields

By Adam Jolyon

The Editor telephoned me and said, "Morning Adam. You know all about muck spreading and the whole horticulture thing don't you?". "Yeeees", I cautiously replied, thinking, "I hope he doesn't want me to help in his garden". He went on, "I want an article on the MVDC's Food Waste scheme. Can you go along to Pippbrook and interview Rob MacPherson who is the head honcho in Waste Management there?". Somewhat relieved, I said, "By all means". Here it is!

Mole Valley has - I was told - the best recycling rate in the south east and one of the best nationally, with a predicted figure of over 55% for 2010-2011, and the aim is to increase the figure to over 60% this year. 30,000 householders have been recycling their food waste since July last year, and since the scheme's introduction, over 500 tonnes of food waste has been collected in the District and processed in Mitcham.

All food waste can be recycled: raw and cooked meat, fish, dairy products (except milk), vegetables and fruit, baked goods, tea and coffee grounds and plate scrapings. The waste is taken to both aerobic and anaerobic Digestive Plants, around 90% to the former and the rest to the latter.

The aerobic plant uses a wet, in-vessel process known as ATAD (Auto-thermal Thermophilic Aerobic Digestion). This process generates temperatures up to 80°C, completely pasteurising and treating the food

waste in as little as 72 hours. The resulting product is high grade nutrient fertiliser for use in all agricultural areas except arable pasture, because of the trace amounts of meat products remaining in the fertiliser and the legal regulations against feeding animals with parts of other animals.

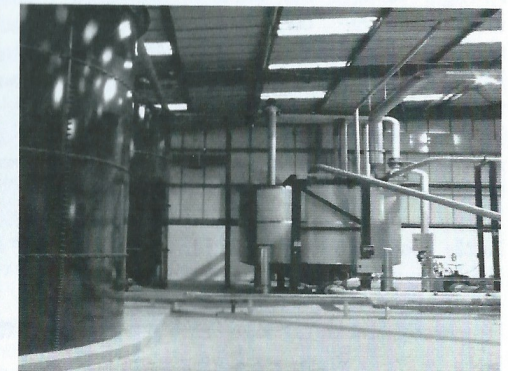
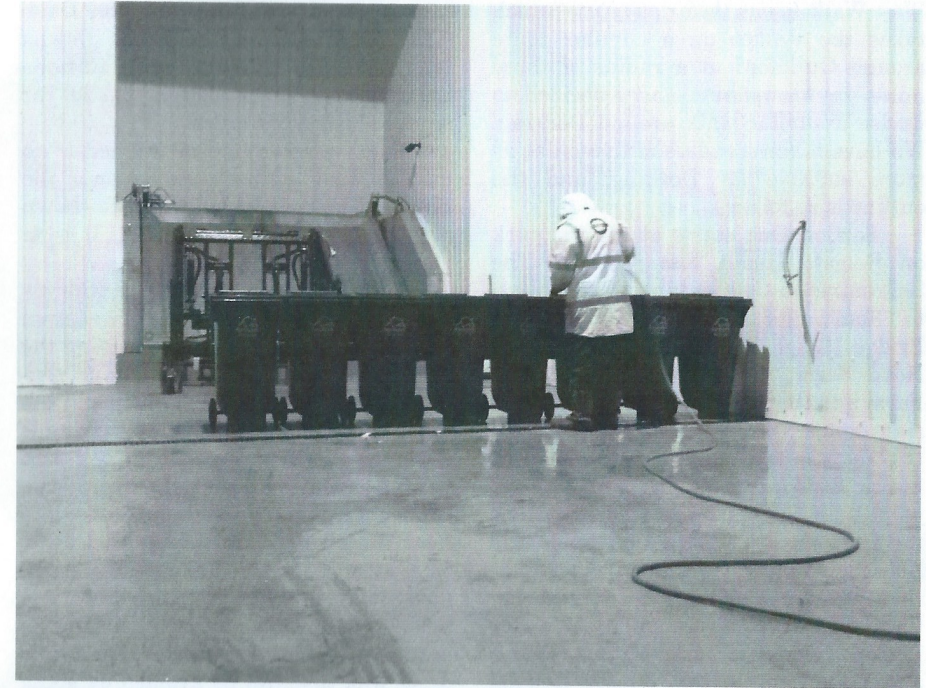
The heat generated by the aerobic process is used at the Mitcham Plant to heat all the buildings.

Bringing the matter closer to home, I raised various questions with Rob, one of which was something my Grandfather's gardener Truckle once said to me and which has remained with me since then. "Never put orange peel on my compost heap, master Adam. It don't do it no good." Rob had a quick chat with the Gardens Department, who said that in the vast quantities of food waste involved it would take the peel from a whole orange grove to affect the fertiliser. "Citrus peel", he said, "just increases the pH of the compost." Another question was one which had been asked of me by a neighbour who complained about the smell from the small green container for use in the home. "Can I disinfect it?", he asked me. I thought no, but Rob said that it was okay so long as the disinfectant was thoroughly rinsed out.

With regard to the cost of all this, so far as we tax payers are concerned, it is negligible. The costs of collecting and shipping waste to Mitcham is more than covered by income from the processing company.

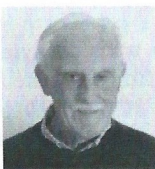
One last point. None of the resulting product from this process is available to the general public. It all goes to the agricultural industry.

With all of the bacteriological implications with decaying food matter at the Digester Plant, Vertal, the company operating the facility in Mitcham, has to maintain an almost 'Clean Room' situation at the plant at all times. To illustrate this, Vertal has supplied these pictures of the plant's interior - and these don't really need captions.



## Get Around The Green Belt of Dorking!

by Francis Bennett



After having been inspired by The Fox Way Walk ([www.thefoxway.com](http://www.thefoxway.com)) which takes the walker on a circular route around Guildford at a radius of three miles, my companion and I decided to devise a similar walk around Dorking. We have taken a radius of five miles as more suitable for Dorking, and the outline is as follows.

Section One starts at the car park on Reigate Heath just north of The Skimmington Castle pub and takes you to Fourwents Pond, via Flanchford Bridge, Leigh, Clayhill Farm, Herons Head Farm, Ewood Farm and Swires Farm and then Fourwents Pond – about eight miles.

Section Two follows on from Fourwents Pond after having rejoined the point near Swires Farm where you left the first section, and takes you to the Abinger Roughs Car Park, via Holmwood Station, Coldharbour, Whiteberry Gate on Wotton Common, Abinger Bottom, Friday Street, Wotton House and West Lane to the Abinger Roughs car park – about seven miles.

Section Three carries on from Abinger Roughs car park to Hundred Pound Bridge on Great Bookham Common, which is where Bookham Road becomes Common Toad (Track) on the map. The route is via Broomy Downs and Hackhurst Farm and up the scarp face of the Downs then through Oaken Grove, Dunley Hill Farm, over Effingham Golf Course, Effingham, Little Bookham and Hundred Pound Bridge car park – about eight miles.

The Fourth Section takes you from Hundred Pound Bridge car park to

Road, Ashtead via Chasemoor Farm, Slyfield House, Barracks Farm, River Lane (Fetcham) Oaklawn Road, Pachesham Manor, Ashtead Common and Craddock Avenue/Forest Crescent, Ashtead – about seven miles.

The Final Section takes you on through Ashtead Park, Headley Park, east of Headley Village, Walton Oaks (The Pfizer offices), the North Downs Way to Colley Hill and down Cliftons Lane to the Skimmington Castle car park – about eight miles.

Every place name mentioned is on the OS Maps, with the exception of the Hundred Pound Bridge which is shown as a car park, but not named. It is at map ref. TQ 120567.

You will need Ordnance Survey Explorer Map 146, and the very eastern edge of OS Explorer 145 on leaving the Abinger Roughs car park. I have purposely given only a rough outline of the route because half the fun of walking is devising the fine detail yourself and perhaps creating your own diversions. In essence, it is a great route and, apart from the struggle up the North Downs face after Abinger Roughs car park, fairly easy walking. If it has been wet before you walk the North Downs section it will be very slippery for a mile or so, and that can be avoided by going south on Buckland Lane just after joining the NDW and finding your way south east down to the car park on Reigate Heath. Of course, as this is a linear walk, you need two cars. One positioned at either end of each section.

*[Editor's Note: the five walks which Francis describes are individual ones and will need logistical planning regarding getting to the start point and arranging to be picked up at the end of the walk, since two cars are not available to everyone.]*

## CORPORATE MEMBERS SUPPORTING THE SOCIETY

Please note that all addresses are of Dorking town and all telephone numbers have the code 01306 unless shown otherwise.

Name	Address	Tel.	Business type
ADV (UK) Ltd	The Old Crumpet Factory, 16 Brockham Lane, Betchworth, RH3 7EL	01737 845 450	Building Preservation & Construction
Antony Wakefield & Co Ltd.	Suite C, South House, South St RH4 2JZ	740 555	Fine Art & general insurance brokers
Betchworth Park Golf Club	Reigate Road, RH4 1NZ	882 052	Golf club
Bray Estates	278/280 High Street, RH4 1QT	740 837	Professional property consultants
Bullimore's	Old Printers Yard, 156 South Street, RH4 2HF	880 880	Chartered accountants
Burley, G & Sons	Burley Corner, Moorhurst Lane, S.Holmwood, RH5 4LJ	711 799	Amenity horticulturist
Carrington (1953) Ltd	5 Stacey's Meadow, Elstead, Godalming, GU8 6BX		
Christique Antique Centre	11 West Street, RH4 1BL	883 849	Antique furniture & interior design
Clear, S J & Co Ltd	65 High Street, RH4 1AW	883 340	Electrical contractors/shop
David Cowan	114 South Street, RH4 1AW	886 622	Solicitors
Dorking Desk Shop, The Downs	41 West Street, RH4 1BN	883 327	Antique furniture dealer
Downsman Ltd	156 High Street, RH4 1BQ	880 110	Solicitors and services
Ellis Atkins & Co	Overdene, Paper Mews, RH4 2TU 1 Paper Mews, 330 High Street, RH4 2TU	887 023 886 681	Management services Chartered accountants
Fothergills Coffee Lounge	19 St Martins Walk, RH4 1UT		Coffee lounge
Friends Provident plc	Pixham End, RH4 1QA	654 4220	Financial services
Garth House Nursing Home	Tower Hill Road, RH4 2AY	880 511	Nursing home
Hart Scales & Hodges	159 High Street, RH4 1AD	884 432	Solicitors
International Sports Marketing Ltd	Bales Court, Barrington Road, RH4 3EJ	743 322	Marketing consultants
Kuoni Travel Ltd	Deepdene Avenue, RH5 4AZ	840 888	Tour operators
Munro, Ian	10 High Street, RH4 1AT	882 270	Men's outfitters
Newton & Co	Ranmore House, 19 Ranmore Road, RH4 1HE	884 208	Chartered accountants
Patrick Gardner & Co	171 High Street, RH4 1AD	877 775	Estate agents
Penwizard Ltd	Dene Lodge, Cotmandene, RH4 2BN		
Priory School, The Rose Hill Nursing Home	West Bank, RH4 3DG	887 337	School
Sears, Philip, Designs	9 Rose Hill, RH4 2EG	882 622	Nursing home
Songhurst, W Ltd	18c Horsham Road, RH4 2JD	884 477	Architectural building surveyor
Treeline Services Ltd	Rayleigh House, Chapel Lane, Westcott, RH4 3PJ	880 411	Builders
Uden, C J & Co	Chadhurst Farm, Coldharbour Lane, RH4 3JH	741 800	Tree care and maintenance
Uden, C J & Co	The Old Crumpet Factory, 16 Brockham Lane, Betchworth, RH3 7EL	01737 845 451	Building Preservation & Construction
Viscount Agencies	Concept House, 3 Dene Street, RH4 2DR	880 715	Duty free agency
Whitelegg Machines Ltd	Fir Tree House, Horsham Road, Beare Green, RH5 4LQ	713 200	Electrical engineers
Woolcock Partnership Ltd, The	Hulsta Studios, 120 South Street, RH4 2EU	880 330	Furniture retailer and installation
Wyevale Country Gardens	Reigate Road, RH5 1NP	884 845	Garden centre

## OTHER CORPORATE MEMBERS SUPPORTING THE SOCIETY

Abinger Parish Council	Dorking Town Centre Management	Newdigate Parish Council
Amis de Gouvieux, Les	Friends of Boxhill	Ockley Parish Council
Ashcombe School	Friends of Gouvieux	Sir Paul Beresford MP & Lady Beresford
Betchworth Parish Council	Friends of Holmwood	The Dorking Advertiser
Brockham Green Village Society	Headley Parish Council	The Guildford Society
Brockham Parish Council	Holmwood Parish Council	The Reigate Society
Buckland Parish Council	Leigh Parish Council	The Surrey Advertiser
Capel Parish Council	Mickleham Parish Council	Westcott Village Association
Charlwood Parish Council	Mole Valley District Council	Wotton Parish Council
Coldharbour Sports and Social Club		

\*\*\*\*\*

Published by the

**DORKING & DISTRICT PRESERVATION SOCIETY**

Design: HE Assoc. Typesetting: Capricorn Wordprocessing Bureau. Printing: Netherne, Dorking



