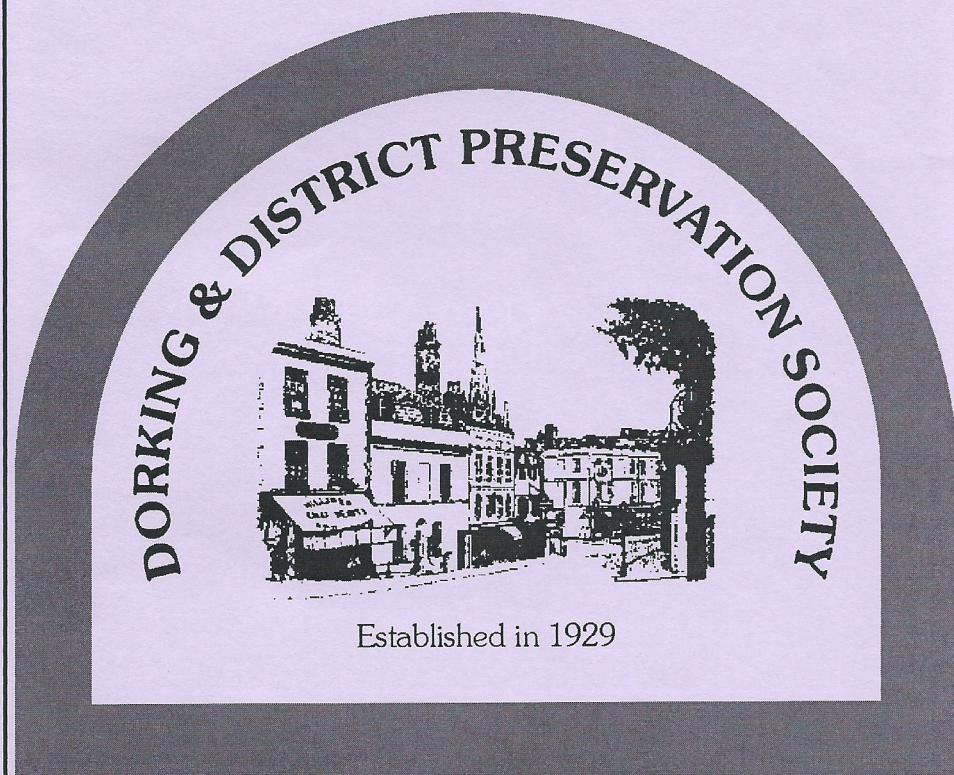


# NEWSLETTER

of the Dorking & District Preservation Society

No. 61

Spring 2012



A company limited by guarantee, reg no 5126366  
Reg charity no 1107459



Large tree on Holmwood Common

Patrick  
**GARDNER & Co**

A THOROUGHLY  
PROFESSIONAL APPROACH

ESTATE AGENTS • SURVEYORS  
RESIDENTIAL LETTINGS

171 High Street, Dorking, Surrey RH4 1AD  
Tel: 01306 877775 Fax: 01306 877780  
email: [dorking@patrickgardner.com](mailto:dorking@patrickgardner.com)

ALSO IN ASHTEAD, LEATHERHEAD  
& BOOKHAM

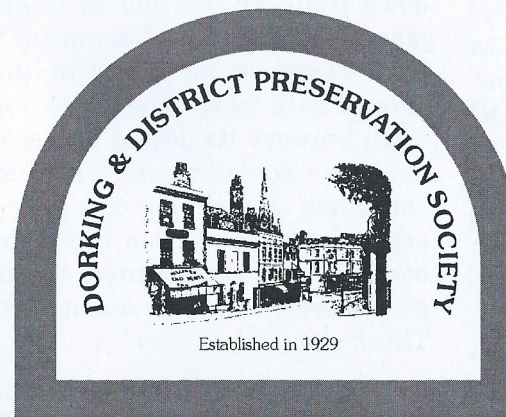
[www.patrickgardner.com](http://www.patrickgardner.com)

# NEWSLETTER

of the Dorking & District Preservation Society

## Contents

Editorial.....	2
Annual General Meeting Notice.....	3
Chairman's Message & Annual Report .....	4
Introducing Elaine Simmons .....	5
Annual Reports .....	6
Obituary – Richard Ingle.....	11
Dorking Museum Update .....	12
Strategic Planning .....	16
Dorking Local History Group – Summer Programme .....	17
Betchworth Castle.....	18
Get around Dorking – Section Three .....	20



NEWSLETTER 61: Spring 2012  
Free to members

Published each April, July and  
October

Last date for copy to be with  
the Editor: **1<sup>st</sup> March, 1<sup>st</sup> June,  
1<sup>st</sup> September.**

Warning of liability: While every  
effort has been taken to ensure  
that all details are correct, the  
publishers cannot accept res-  
ponsibility for the accuracy of  
information in reviews or fea-  
tures, nor for the consequences  
of any action taken as a result  
of this information. The views of  
the contributors do not neces-  
sarily reflect those of the  
publishers.

The Editor welcomes letters and  
items for publication from  
members and other readers. All  
unattributed material is contrib-  
uted by the Editor.

**President:**

Adrian White, CBE., DL

**Chairman:**

Chris Heaps  
'Pinecroft'  
Ridgeway Road  
Dorking RH4 3AP  
Telephone:01306-881752

**Minute Secretary:**

Linda Freshney

**Editor:**

Hank Etheridge  
18 The Orchard  
Ashurst Drive, Boxhill Road  
Tadworth KT20 7LP  
Telephone:01737-844379

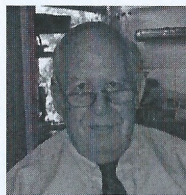
**Membership/Subscriptions:**

Jean Pearson  
Osbrooks Lodge, Horsham Road  
Capel RH5 5JH  
Telephone:01306-711043

[www.ddps.org.uk](http://www.ddps.org.uk)



## editorial



After the summer issue was published, the delightful Margaret Cooksey telephoned me to chide me about professing a liking for the proposed Lidl store in Vincent Lane; "*You are the voice of the Society*", she said. Now, I have edited quite a few journals in my time, and have always worked on the principle that an editor can, from time to time, express a personal opinion. To a degree, Margaret was partly right. However, the VOICE of the Society is contained in the articles and reports in the Newsletter: I commission them and design them into the format but, as I say above, it is the articles themselves that put over the Society activities.

The demographic of Dorking shows that around two thirds of its inhabitants are on low or medium incomes, so an 'economy' store seems to me a 'GOOD IDEA'.

In this issue, we publish all of the annual reports of the Society's Officers who have spent a great deal of time on your behalf dealing with the many challenges of Planning and the refurbishment of the DDPS Museum and Heritage Centre, the Local History

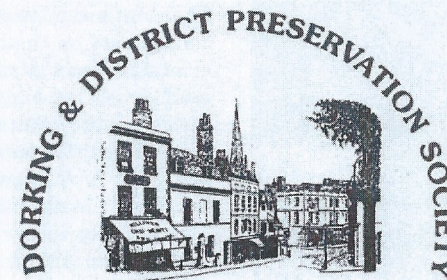
Group, the work of the Membership Secretary and, lastly but not least, the 'Yomping' of Francis Bennett and the wonderful walks he organises.

I have persuaded, with the help of his mother, Beryl, Martin Higgins to write a short piece about Betchworth Castle, a task he has taken on almost single-handedly, to make it, at some time in the future, a place everyone can visit safely. Everyone loves a 'Romantic Ruin'.

There is also a spread on the refurbishment of the Museum and the excellent work of the architect, Patrick Amos, Mark Eshelby who has been in control of the operation, Peter Camp who has monitored – along with his committee – the work as it progressed, and the many volunteers who have given freely of their time to bring the project to fruition.

Having reached halfway through my eighties and stepping down from my position as Chairman of the Planning Committee, I shall carry on as editor of this journal with more time to see how I can improve its design and seek out more contributors. I remember when I took on this job, I asked for articles from the membership. I am sure there are some good stories out there among you. Think about it!

*Hank Etheridge, Editor*



Established in 1929

The Annual General Meeting of the Society  
will take place on  
Wednesday, April 25<sup>th</sup> at 7.30pm  
in the

Friends' Meeting House  
Butter Hill  
Dorking

After the formal meeting there will be  
an interval for refreshments

Followed by an illustrated talk by

Kathy Atherton

on

The Refurbishment and  
Reopening of the Museum



## Chairman's Message & Annual Report



I write this report as I approach the end of my first year as Chairman of the Dorking & District Preservation Society ("DDPS" or "the Society").

As I was unable to attend the AGM last year, I commence by paying my personal tribute to the enormous contribution made to DDPS by Sir Martin Wedgwood over so many years as Chairman of the Society. His death in post in 2010 was sudden and unexpected, and it is very sad that he was unable to receive in person the indications of respect and gratitude that would have been expressed had he retired, as he planned, at the AGM in 2011. The Society is also indebted to Derek Rowbotham for so ably stepping into the breach on Sir Martin's death and for leading the Society up to and at the AGM in 2011.

I was elected as Chairman at a very busy, if exciting, time for DDPS. Throughout the year, members too numerous to mention individually have been spending an enormous amount of time and energy overseeing the reconstruction of the museum and preparing for its re-opening later this year. It can be considered invidious to mention some but not all names, but I must pay a special tribute to two members of the team involved with the museum. Peter Camp, with a meticulous attention to detail, has overseen the arrangements between the Society, the Museum Group and the builders and other professionals and has reacted immediately and effectively to any problems which have inevitably arisen during the building programme. Without his input, I am convinced that the museum building works would not have proceeded within time and within budget.

A museum building has to be fit for

purpose, and this has been ensured by Kathy Atherton and her museum team. Their intention is that the museum will concentrate on the history of Dorking and artefacts associated with Dorking, and much work is being carried out in preparation for the identification and display of these items. The museum will also include a display of Wedgwood china which was kindly bequeathed to the museum by Sir Martin. John Steer has made a valuable contribution as our new curator, and his skills will be in great demand in the coming months.

The opening of the museum will give the Society, the Museum Group and the History Group an opportunity, possibly unrepeatable in our lifetime, of raising the profile of all sections of the Society. We must not squander this opportunity. At the DDPS AGM, I will stress the hope that more members of the Society will take part in the affairs of the museum, perhaps by volunteering as stewards, and in the History Group, and that all will understand that the groups are part of DDPS. Perhaps even more importantly, we must all use this opportunity of raising the profile of DDPS within Dorking and actively to seek to raise our membership numbers and to increase participation in our affairs.

The activities in West Street should not overshadow other activities of the Society. I must express my thanks to all members of the DDPS Council for their support during the year. Francis Bennett has stood down as the Council member responsible for footpaths, and Hank Etheridge has announced that he is retiring as chairman of the Planning sub-committee. Christine Thom has given up the duties of secretary to the Council, but I am pleased to report that Linda Freshney has efficiently stepped into her shoes. All have served the Society for many years, and I am glad that all have indicated a desire to continue to support DDPS: Hank will remain on the Council and will continue to edit the Newsletter, and Christine has taken over as secretary

to the History Group. I thank them all.

As ever, our finances have been kept in order under the careful eye of our Hon. Treasurer, Alan Loryman.

In the planning field, the Society has continued to be assisted by Derek Rowbotham. Derek's experience as a former planning inspector was invaluable when the Society (jointly with the Holloway Estate Residents Association) instructed lawyers to appear at a three-day planning appeal inquiry in early 2011 to oppose an application for the development of Marley Mead on the edge of the town and within an Area of Great Landscape Value. The Society was anxious that such a planning application – which sadly the Inspector granted – could create a dangerous precedent, especially in the light of the Coalition Government's apparent desire to relax planning controls. The Society submitted a memorandum in response to the Government's consultation paper.

As the Chinese say – "*We live in interesting times*". "*Interesting*" can be translated as "*brave*" in the words of Sir Humphrey Appleton, who in "*Yes, Minister*", always advised against ministers making brave decisions. However, with the opening of the museum, the possible changes in planning law, and our expectation that planning applications for residential development on the boundaries of Dorking can be anticipated (even within the Green Belt), DDPS will be unable to avoid making decisions in response to many challenges in the next few years. The DDPS and I look forward to receiving your support in facing these challenges.

I have quoted the Chinese proverb in this report (albeit in English), but I shall avoid in future any quotations from Tacitus after my earlier two attempts were sabotaged by printing errors!

*Chris Heaps*



**Elaine Simmons**  
*The new Chairman of the  
DDPS Planning sub  
Committee*

Elaine Simmons took over as Chair of the DDPS Planning Committee in March 2012. Originally from Derbyshire she has lived in Dorking since moving here with her husband in 1984, having decided it would be an ideal place to raise their two sons while still being commutable for London. Elaine worked for Royal Mail International for ten years before joining the national volunteering and training charity CSV in the mid 1990's. Here she worked with a wide range of clients delivering education focused projects for young people and with government, businesses, trusts and foundations to secure funding for education and heritage projects. Most recently involved in research of various sorts she has an enduring interest in history and heritage and was a member of the National Trust for some years. She is closely acquainted with planning as her husband is a chartered town planner who, having worked with both private clients and councils, has wide experience of the planning process. In her free time Elaine is an avid reader and loves to travel and swim. She can often be seen walking her two Cavalier King Charles spaniels on Meadowbank.



# Annual Reports

## Vice Chairman & Planning Policy

A postal election for Chairman of the Society took place over the period February to March 2011. Nominations were open to all members and Jean Pearson and Chris Heaps were nominated and stood for election. Chris Heaps was elected by a certified majority of the 460 members who were qualified to vote and the result was endorsed at the AGM held on the 20<sup>th</sup> April 2011.

The proposal of Linden/Wates (Dorking) Ltd to build 38 dwellings on the Marley Mead site was refused by the District Council. However, an appeal was upheld and planning permission given following a public inquiry in April 2011. Objections to the overall scheme for car parking, landscaping, open space and access via Marley Rise was mounted by DDPS, Holloway Estate Residents Association (HERA) and the Highacre Grange Management Company Ltd (HGMCL). The case turned on the main issues of comparative local density and character, detrimental development in the AONB and the premature and unnecessary release of the site for housing, following the rejection of Regional Housing targets by the Government. Chris Heaps and myself gave evidence and DDPS, HERA and HGMCL all contributed to the cost of litigation.

In July 2011 the Government issued a national declaration of the detailed policy summarising all previous planning policy statements, in the Draft National Planning Policy

Framework Consultation (DNPPF). The Society considered a detailed response (along with others) might help to prevent a new principle being brought into force, which would replace established policy, by determining that all proposals for sustainable development be given priority. This would be the case whether subject to protective designation or not. In this, no guidance on the meaning of sustainable development was offered. We clearly believed that such a ruling, if extended to any economic development, would override all other circumstances where these dictated that development would be detrimental, on environmental or other spatial grounds.

This response document is available. The Guildford Society and Reigate Society have adopted similar statements and commented to this effect in their response to the Secretary of State. The Government has withdrawn the DNPPF for further consideration and eventual publication, taking into account consultations.

The Society has been involved in the consultation on the Dorking Town Centre Area Action Plan. Our comments on the evolving plan in 2010 were to the effect that of the options for the enlarged and commercial impact on the High Street, the Waitrose Store was a popular choice and the Society favoured this enlargement on the existing site as a component of policy in the town centre. The several proposals located off Vincent Lane and Curtis Road for the larger supermarkets were not favoured because of the poor pedestrian links and impact on the High

Street. Morrisons needed satisfactory improvement for pedestrian and car access when taking into account the event of development for large industrial units at the end of Curtis Road. The Society still has reservations about the intended Sainsbury's proposal for development of land at the rear of St Martin's Walk. Policy DT3 in the Draft Town Area Action Plan is noted and the criteria 1 to 10 are supported, as is the indication stated in Para 29 that the existing Sainsbury's store in the High Street will be refurbished and re-let. A definite affirmation of the scheme at the rear of the St Martin's Walk site must be dependent on the submitted detail of the overall proposal, mainly concerning the car parking capacity serving the store, and the detailed traffic management measures controlling traffic capacity at the junction of Mill Street and the High Street. The Draft Area Action Plan at Para 8.49 notes that a signalled controlled junction supporting a free flow of traffic on the highway network is a likely requirement. The funding aspect of this development noted at Para 8.50 in the Plan will be an important factor.

The Society made strong representations to retain the administrative character of the Pippbrook Campus area, i.e. Council Offices "the Pepper Pots", as well as Pippbrook House. Our comments were "Support Option A - on the grounds that the civic buildings are appreciated by residents of Dorking, and (they) provide an interesting and eye-catching introduction to the town from the east. We also believe that residential development around the

(grade 2 listed) Pippbrook House would destroy the open grounds which are an integral part of its listed status". In the further discussions, we support the MV Council intention to review costs of maintaining two buildings to arrive at a fully costed conclusion on the future for this area as indicated in the light of the draft Policy DT9 in the Draft AAP.

Our contributions to the various planning application assessments have concerned interpretation of developments which have been within the adopted Green Belt and the AONB. These are forerunners of many more applications to come when sites will be sought for homes to be built within these designated areas.

Derek Rowbotham

---

## Chairman, Planning

My committee and I were going to make some comments to MVDC about the Lidl Application and the one from Persimmon to build homes next to it, but we were advised by our Head of Strategic Planning not to do so. The Lidl scheme has, however, been approved by MVDC Councillors.

A similar situation evolved regarding the Cherkley Court Application. My committee was divided on our course of action, so once again we sought advice from Derek, who gave us a form of words that was somewhat neutral for our response to MVDC. However, it did recommend that, at certain times in the year, Cherkley Court should be open to the public as an Heritage resource.

After having to look at many applications for buildings of minimal



architectural merit, it was a joy to have one that we shall recommend for the Society's 'Best Development Competition'. The plan is to knock down a 'Married Quarters' style building in The Hildens in Westcott and replace it with a beautifully designed contemporary house with ergonomically designed floor plans and attractive elevations.

We were peripherally involved in an Application to convert a chapel in Brockham into habitable accommodation. Problems arose regarding access to the property which were solved due to the flexibility displayed by both the applicant and the Case Officer concerned. We were so impressed we sent a letter noting this.

We looked at the Application to build a three-storey rear extension to the Mullin's House in West Street, and a two-storey dwelling to replace a dilapidated, detached storage facility in the yard at the rear. As this was a Listed building application, we took time to consult with the Case Officer and Peter Mills, the Conservation Officer. We established that wall paintings in the Mullin's House were going to be preserved behind acrylic panels, and every care taken to preserve the main structural features of the dwelling. Both Peter Mills and we were enthusiastic about the new dwelling planned for the back yard, it being of contemporary design with a vague 'industrial' look offset by vertical wood cladding and a 'sedum' roof. For some reason this Application became a *cause célèbre* and my committee and I have been unjustly castigated for our response.

We wrote a letter to SCC objecting to the planned composting facility

in Henfold Lane on the grounds of the traffic disruption it would cause, especially if economic reasons meant that the facility took in material from outside of the County.

As you will have seen from the chairman's report, I have stood down from chairing the planning committee and have passed the role into the capable hands of Elaine Simmons.

*Hank Etheridge*

---

### Membership

We started 2012 with the closure of the Barclays bank account, which should assist the Treasurer considerably as it is more workable to have just one account for the Society.

Sadly the membership has fallen since I took on my role two years ago, when we had well over 450 members. We are now down to 388 (460 if you include corporate members). Some of this has been due either to members moving from the district or being unable to continue their membership, or sadly because they are no longer with us.

As you know, I am keen to encourage the younger generation to take an interest in their heritage. In January I went to talk to the Youth Council along with a colleague (another enthusiastic member), and was able to convey to them the need for the younger generation to take more than a superficial interest in our history and heritage. I think my talk worked, as I am invited to join their sub-committee on local affairs.

I am hoping that two major events this year – the Queen's Diamond Jubilee and the Olympic Games (particularly the Cycling Race coming

to Mole Valley) will stimulate more interest in our Preservation Society, and we are looking to update the literature with a brief outline of the Society.

*Jean Pearson*

---

### Footpaths

I have been walking the paths in the area over the past year and have been reporting damaged way marks, finger posts and blocked footpaths throughout the Dorking & District Preservation Society's area to Surrey County Council. These have been repaired in the fullness of time. SCC send out their contractors when they have a sufficient build-up of work. A report of a problem will not necessarily be acted on straight away.

I have made regular contributions to the Society's Newsletter in an effort to encourage members to wander further afield from the walks we know and love so well in our immediate vicinity. I am currently describing a series of walks making a circular walk around Dorking at a radius of about 5 miles. The next town to be circled will be Horsham, already put out in minor detail, which will have each of the five day sections in much fuller detail. Crawley will follow, probably in 2013. I will also report on a fascinating walk at approximately 8 miles radius of the centre of London, the Capital Ring.

*Francis Bennett*



### DDPS Museum & Heritage Centre

The building refurbishment project got underway in August 2011 under a contract put in place by the DDPS with architect and project manager, Patrick Amos. The new archive area has now been racked out and material moved back into place. The builders are due to hand back the main building on completion of works in March 2012. They will then complete works on the old library building.

The museum committee has been working with museum interior designer Chris Jones of Smith and Jones of Bristol on an interior layout and exhibition plan. A large exhibition team has put together a detailed exhibition plan covering artefacts, paintings, textiles and archaeological material. Some 50 interpretive panels have been researched and written.

Alongside the exhibition planning the team has put together a detailed business plan and education and outreach strategy, undertaken a re-branding - including commissioning of a new website, put in place comprehensive health and safety procedures, and is now working on a strategy for recruiting visitor assistants to man the museum when it re-opens.

The museum has generated a large amount of coverage in the press and social media and the project is



being supported by many local people and organisations.

*Kathy Atherton*

---

### Local History Group

The Group has been successful during 2011 due to the support of the members – and, of course, the committee.

Regrettably, we do have two vacancies to fill in 2012. Katie Mackay is retiring after four years as the Outings' Organiser, along with Tim and Cathy Stevens as Organisers for our Meetings and Speakers. All will be missed and I thank them for their valuable help over the past years.

They have, immediately prior to retiring, organised the events for this Summer. I am sure that we are all very grateful for this. Applications are urgently needed to fill these positions – please!

Christine Thom has now taken over from Bruce Galley, as our new Treasurer. Bruce has completed the accounts for 2011 – thank you.

I would like to commend all the other members of the committee for their help during 2011. This also applies to those providing the refreshments after our meetings.

Regarding our financial situation – we made a small loss of £171 for the year. This was mainly due to the provision of wallets for our digitally scanned photographic collection (£181). I have to thank Yvonne Durell for completing this project.

The other reason for the loss was the reduction in the sales of publications. Not only were Waterstones well stocked from 2010, but they were closed for a period of the year and are now in smaller premises.

The museum has been taking some books for sale during the year, but with the re-opening of the museum this summer, we hope for considerably increased sales during 2012.

Our membership has risen during the year to 226 (fully paid up members), and whilst this is short of our original target of 240, I hope we can make up our numbers through various initiatives. We do have our application forms in both the Mole Valley DC reception area and in the new Library. They will be displayed in the museum when it re-opens. In 2012 we will improve the appearance of the application form.

The committee has met on ten occasions during the year, and we thank the museum for the use of the old library building – and now, of course, the new archives.

There were 14 meetings and outings organised during the year; all very well attended, and both of the outings have been most successful. Again, our thanks go to the organisers.

I consider this to be very good value for a maximum membership fee of £8. We do propose to keep this the same for 2012.

We look forward to 2012 being another successful year.

*Peter Camp, Chairman*

---

## *Obituary*



### Richard Ingle 1926 – 2011

The executive and Council of the Society were saddened by the news of Richard's death on October 15 last year. He was an active member of the DDPS Council, dealing with the long-standing but frustrating Deepdene Gardens project. His extensive knowledge of planning was also a great asset to the Society when dealing with Mole Valley's Planning executives.

Richard was born in Dry Drayton near Cambridge, and in his teens studied at Cambridge Technical College. His first job was as a draughtsman for the GPO, then moving to the Planning department of Cambridge City Council where he was encouraged to become a qualified Town Planner, something he achieved after studying at University College, London. He then went on to work for various District Councils, eventually becoming Director of Planning at Reigate & Banstead Council.

In 1975 Richard moved to Leigh with his wife Brenda and son David.

He retired in 1986 and became a member of CPRE, becoming Chairman of the Mole Valley branch and, later, of the County branch.

In the early nineties he and Brenda founded the Surrey Gardens Trust and were involved with the Arts & Crafts Movement in Surrey. For pleasure, as well as enjoying his garden and his animals – horses, goats, dogs, poultry and bees – he sang with the Leigh Church choir and Brockham Choral Society.

*Hank Etheridge*

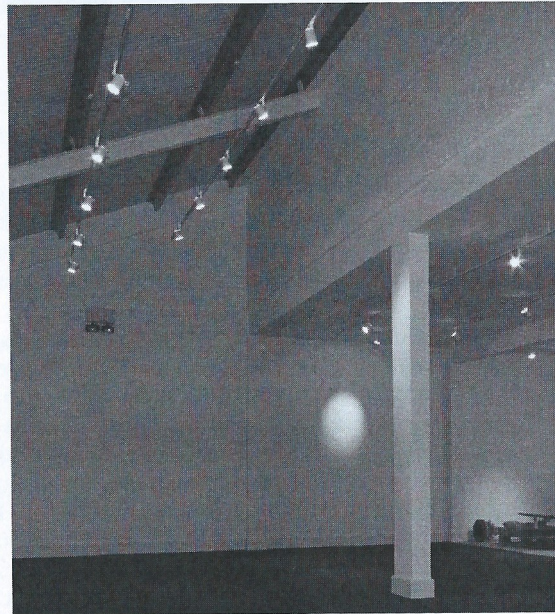
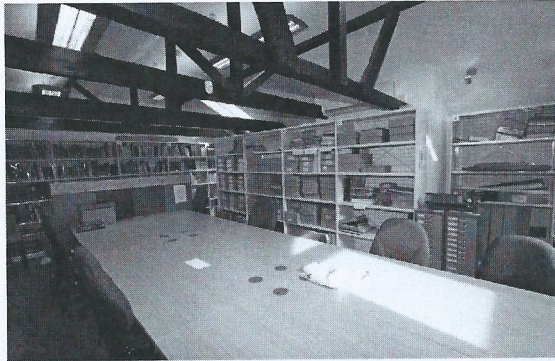
*I am extremely grateful to Richard's wife Brenda and his friend David Hanson in the preparation of this appreciation of Richard's life.*



## It's dotting the i's and crossing the t's time at the re-vamped Museum

The building work is finished, all we have to do is to put in the furniture and we shall be opening very soon. Thanks are due to all who were involved, including Mark by who was in charge of the renovation, Peter Camp who spent many hours liaising with Patrick and last – but not least – all the dedicated members of the Museum Committee in charge of fitting the building out. As you will see from the pictures, the museum is now 'fit for purpose' and a building to be proud of and ready to welcome visitors interested in The History of Dorking.

*by Kathy Atherton*



The refurbished Museum is now looking as a Museum should look. The archives have been moved onto the upper floor and new desks and chairs are now in place. Emma Sheridan Smith is putting together the computer specification for the archives, in liaison with Roger Troughton, money for which has been pledged by Maureen Cole, and other equipment has now been ordered in readiness for the re-opening. Susannah Home has started to rationalise the library stock, getting rid of non-relevant material to allow for new acquisitions in a space which, although larger than before, is not finite.

### Fitting out

Museum designer Chris Jones has prepared detailed visuals of what will be going where, which will be costed out down to the last penny and will include display panels. A detailed exhibition has been produced with help from John See. This covers artefacts, paintings, archive material and interpretive panels, upon which a team of

researchers and writers is working. Professor Richard Selley and Mary Day are checking factual content for the panels, and the wording will be checked by Heather and Fergus Cannan-Braniff – both museum professionals – to ensure the text writing meets museum standards. Lisa Geelhood, another museum professional, is working on





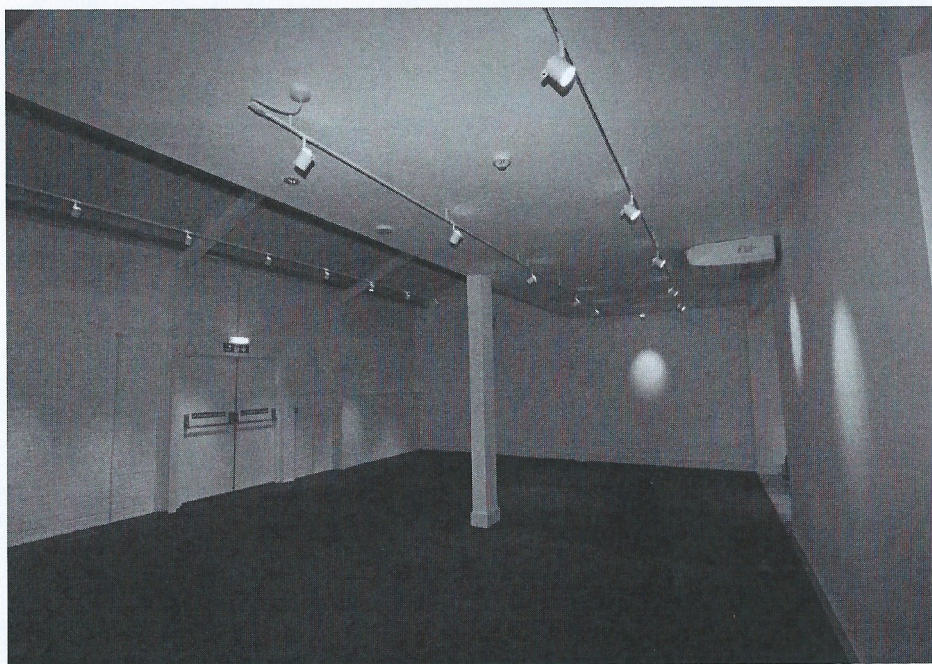
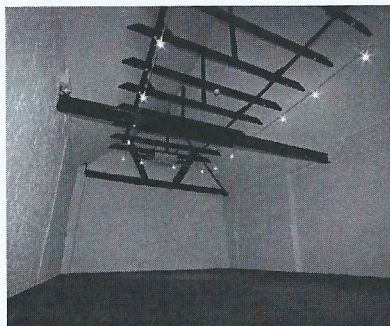
interactive and educational material.

### Donations and fundraising

Networking among various organisations has brought forth considerable support from local groups. The Geological Association has pledged £2000 and The Rotary Club of Dorking, £1000. West Surrey NADFAS has pledged £1200 for new display cases. The Petroleum Exploration Society of Great Britain has donated £1000 and Dorking Inner Wheel has promised the amount raised at its Christmas Social. Small donations continue to come in, and sales of David Drummond's picture collection continues to bring in funds. Sales of unwanted bookcases raised £10,500.

### Education

Lisa Geelhood is contacting all schools in the area to get some idea of their requirements. She has also taken on the responsibility for museum outreach, and is putting together workshop programmes and workshops.



### Business Plan

Emma Sheridan Smith has compiled a Business Plan and we are dealing with Mole Valley regarding business rate relief. It is, of course, vital that the Plan is robust so that we can cover our running costs. Emma has applied for various grants, but it is obvious that sales (Erica Chambers is putting together a strategy for this), donations and grants will all have to increase considerably.

### Artefacts

John Steer is in charge of artefacts and of disposing of unwanted items. Julie Goodliffe, a museum-trained

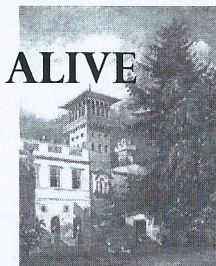
textile expert, is doing a similar job with textiles, and Sandra Wedgwood will be dealing with paintings. Frank Pemberton will be Curator of archaeology.

### Volunteers

We urgently need someone to fill the role of **Facilities Manager** to organise maintenance, cleaning rotas and Health & Safety checks. This is an important post, but we are finding it hard to fill it because the task needs someone with previous experience and who is willing to have day-to-day contact with the museum.

## KEEPING DORKING'S HISTORY ALIVE

- Could you support your local community in keeping its unique character and history alive?
- Could you help engage visitors and locals and promote Dorking and its history?
- Can you spare four hours a fortnight?
- Would you like to be part of a community-run project and gain hands-on experience in a unique setting?



Dorking Museum will be reopening in 2012 but can only do so with a team of enthusiastic Volunteer Visitor Assistants. It is a Museum entirely supported through donations and Volunteers. Volunteering is open to anyone aged 16 – 60, whatever your background and experience – you do not need to be an expert in local history! Full training and support will be provided.

If you would like to be part of this exciting project, or like further information, Contact Nicole Gerrard on 01306 876591 or e-mail: [nkgerrard@googlemail.com](mailto:nkgerrard@googlemail.com).



# Strategic Planning



By Derek Rowbotham

The use of the words strategy, stratagem or any word which might be considered to be the antonym of 'tactics' conveys the in-depth examination and collation of information that will direct on a large scale the operations to make a plan or action that would achieve a long-term or overall aim. The word is derived from the action or plan needed to direct large-scale military operations prior to the actual engagement with an enemy. These meanings were from the early 19<sup>th</sup> century words from Greek *stratégia* and French *stratégie* conveying skill in managing or planning using a stratagem, i.e. the artful means to some end.

The meaning of strategy has, however, been used to accommodate non-military matters such as a coherent economic strategy or a comprehensive marketing strategy, as well as in land use planning – reference at different scales of planning such as regional planning, and now in reference to local framework development – core strategies. These set out the long term aims of a coherent plan for development in the districts of England and Wales. Mole Valley District Council has been well to the fore, having adopted the Mole Valley Local Development Framework (LDF) Core Strategy in October 2009. Completing this complicated work has placed Mole Valley amongst only a few Local Authorities to have done so.

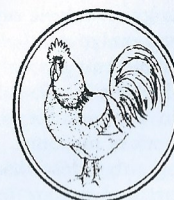
It is the intention of Mole Valley to extend the LDF by completing specific Development Plan Documents (DPD).

Adding to housing, for example, will require identification of the sites necessary to build a calculated number of dwellings to meet an assessed need for each of the years up to and including 2026. Policy CS2 in the Core Strategy states that the indicative numbers of homes involved will be located in the defined built-up areas throughout the district, with exceptionally small-scale affordable housing schemes on sites outside but adjoining listed rural settlement boundaries, also being provided.

The adopted strategy flags-up that the programme can be completed without the need to use Green Belt/green field land until about 2016-2017. Thereafter, it is laid down that site identification, set out in the DPD, will incorporate a review of the Green Belt boundary. This reflects the difficulty there is in planning for housing growth in Mole Valley. The extent of the Metropolitan Green Belt and the protected landscape designations restrict the flexibility of the choice of sites required to meet high housing targets. Since the adoption of the Core Strategy in 2009, government has proposed the Draft National Planning Policy Framework (DNPPF), setting out a summarised, omnibus version of the planning rules. These have been written in a way that embodies growth without emphasising a balanced approach to meet strategic aims. The very strong opposition to the DNPPF illustrates the weakness that is created by laying a strategic foundation that is, in itself, faulty.

*Derek Rowbotham  
Vice Chairman & Planning Policy*

# DORKING LOCAL HISTORY GROUP



## SUMMER PROGRAMME 2012

**MAY 1 C. Ansell & Sons – builders since 1791**  
*David Ansell*

**JUNE 12 Visit to Dorking Museum \***

**JULY 3 Duxhurst**  
*Ros Black*

**AUG. 7 Walk and Talk Milton Street**  
*Peter Bennett*  
(Meet 7pm Westcott Cricket Club Car park)

**SEPT. 4 The growth of Railways around Dorking and Leatherhead**  
*Peter Tarplee*

**OCT. 2 Emma Darwin**  
*Linda Heath*

\* Please note date change

Meetings are held at the Friends' Meeting House, Butter Hill, South Street, usually on the first Tuesday of the Month at 7.30pm.

# DONATION FORM

DORKING & DISTRICT PRESERVATION SOCIETY

I want to help refurbish and refit the Dorking Museum and Heritage Centre.

Please find enclosed a donation of

£.....

Name.....

Address.....

.....

.....

.....Post Code.....

Please make your cheque payable to:  
**DDPS Museum Reconstruction Fund.**  
Send to: Alan Loryman, Dorking Museum,  
62 West Street, Dorking RH4 1BS

If you would like to receive more information about other ways to help, or become a volunteer, please tick box

Email:.....

Telephone Number:.....

I am a UK taxpayer currently paying income tax or Capital Gains tax that is at least equal to the tax deducted from my donation. I should like the Dorking & District Preservation Society to claim back the tax on this gift and any future gifts until further notice.

Signature

Date

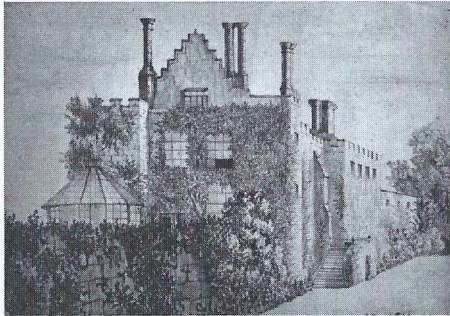
If you would like a receipt, tick here

Registered Charity No. 1107459 Trustees: The Council of the Dorking & District Preservation Society



## Betchworth's Romantic Ruin opens to the public once more

A report by Martin Higgins on the history and the recent conservation works on the medieval Betchworth Castle



A significant grant from English Heritage has allowed extensive conservation work to the ruins of Betchworth Castle over the last twelve months. The completed phase has made the standing remains safe. This spring, further work will be undertaken to the terrace wall on which the castle stands.

The castle was turned into a romantic ruin in 1835, and the owner proposes to



maintain it in this form. Plant growth, weathering and storms have taken their toll since 1835, leading to some sections being demolished in 1965. The current work has removed the plant growth from the tops of the walls and re-bedded the stones. The wall tops have been given a 'soft capping' of turf to prevent frost damage and hold and release rainwater, rather than it soaking into the masonry itself. New stone-coloured brickwork has been built under the previously unsupported areas of masonry.

The listing entry describes Betchworth Castle as a fortified manor house. Few of these survive nationally, and this is the only example in Surrey of the nine that once existed. In 1449 its owner, Sir Thomas Browne, was granted a licence to *crenulate and embattle his manor of Bechesworth* and this is the date traditionally ascribed to the present fabric, although recent research suggests it is slightly later. Not all fortified manor houses had licences from the Crown, but having one meant that nobody could challenge the owner's right to call his home a castle.

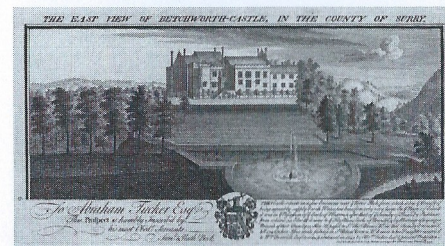
The drawing, illustrated below, was made by John Aubrey in 1673. This shows it from the north with a large tower - interpreted as a chamber block - to the east (left) and a tall tower over the gatehouse to the west. At this time the castle was a large, approximately square courtyard building,

set in an imposing location of the crest of the hill. The ruins that survive represent approximately one eighth of the building illustrated by Aubrey, so bear this in mind if you visit.

Modest information panels will be erected on site toward the end of this year, but public access is already possible, with care, on foot during daylight hours. Ideally walk or cycle to the site but, if driving, park in the loop of the road opposite the garden centre on the A25 east of Dorking, near the 'Betchworth Golf Course' sign. (Grid Reference TQ184 501). Follow the 530m (575yds) long track way which starts at the five bar gate. To prevent vandalism, the gate in the railings surrounding the ruins has to be kept locked, but you may access the terrace and the main elevation by following the mown path to the right. White posts mark the boundary between the golf course and the castle land.

**Please do not attempt to access the ruins via Castle gardens, along the riverside or across the golf course. ALL THESE ROUTES ARE PRIVATE.**

Betchworth Castle forms part of the 'Hope Springs Eternal' lottery bid submitted by Mole Valley District Council which, if successful, will enable further investigation of the site, improved access and preparation of interpretive material. In the long term, the owner of the Castle anticipates setting up a Trust for the site supported by an endowment to ensure it will continue to be maintained and publicly accessible. His plan is to fund this by building a house on part of the site and putting the increase in value of the land into the endowment.





## Get around Dorking Section three

By Francis Bennett

Section 3 carries on from Abinger Rough's car park to Hundred Pound Bridge on Great Bookham Common, which is where Bookham Road becomes Common Road (track). The route is via Broomy Downs and Hackhurst Farm and up the scarp face of the Downs, then through Oaken Grove, Dunley Hill farm, over Effingham Golf Course, Effingham, Little Bookham and back to the car park - around 8 miles.

Abinger Roughs is an area of mixed woodland and grassland, part of which, Piney Copse, was given to the National Trust by the author E M Forster. There are good walks within the Roughs. Leaflets available at the car park.

Leave Abinger Roughs northwards toward Leaser's Barn and its memorial that marks the spot where William Wilberforce, the Bishop of Winchester, was fatally thrown from his horse in 1873.



At the Barn, dating from the 16<sup>th</sup> century, turn west and follow the footpath over Broomy Downs to Hackhurst Lane, turning north over the railway bridge and on past Hackhurst Farm, dating from the mid 16<sup>th</sup> century and owned by the NT. Go through the farm and up the scarp face to the top of the North Downs.

Cross over the North Downs Way, through a five-bar gate and head for Oaken Grove in Sheepwalk Lane, heading NW for about 160 yds, then north to Crocknorth Road Here, go SE for about 325 yds and along a bridle path through Pump Pond Wood, alongside Six Acre Copse then across Effingham Golf Course created in 1927 and 490ft above sea level: the views toward London are stupendous. The listed Club House was built in the 1770's. Follow the dedicated footpaths across the golf course toward Warren Farm, then onto the A246, Guildford to Effingham Road. Cross the road between some houses and arrive at Effingham Village. Cross over the road, going north, past St Lawrence Church (12<sup>th</sup> century) and final resting place of Sir Barnes Wallace.



Continue WNW past two schools, turning north on a footpath between greenhouses toward little Bookham and Oaken Wood. Turn west for 325 yds, then north past some houses to cross the railway line. Continue to the south car park on Bookham Common which was given to the NT and is an SSSI. It has twelve ponds, five of which are man-made. It is also home to the Purple Emperor butterfly. Pass by a group of houses known as the 'Isle of Wight' on your right until you reach the north car park at Hundred Pound Bridge on Bookham Road. As before, you will need a car at both ends of the walk.

## CORPORATE MEMBERS SUPPORTING THE SOCIETY

Please note that all addresses are of Dorking town and all telephone numbers have the code 01306 unless shown otherwise.

Name	Address	Tel.	Business type
ADV (UK) Ltd	The Old Crumpey Factory, 16 Brockham Lane, Betchworth, RH3 7EL	01737 845 450	Building Preservation & Construction
Antony Wakefield & Co Ltd.	Suite C, South House, South St RH4 2JZ	740 555	Fine Art & general insurance brokers
Betchworth Park Golf Club	Reigate Road, RH4 1NZ	882 052	Golf club
Bray Estates	278/280 High Street, RH4 1QT	740 837	Professional property consultants
Bullimore's	Old Printers Yard, 156 South Street, RH4 2HF	880 880	Chartered accountants
Burley, G & Sons	Burley Corner, Moorhurst Lane, S.Holmwood, RH5 4LJ	711 799	Amenity horticulturist
Carrington (1953) Ltd	5 Stacey's Meadow, Elstead, Godalming, GU8 6BX		
Christique Antique Centre	11 West Street, RH4 1BL	883 849	Antique furniture & interior design
Clear, S J & Co Ltd	65 High Street, RH4 1AW	883 340	Electrical contractors/shop
David Cowan	114 South Street, RH4 1AW	886 622	Solicitors
Dorking Desk Shop, The Downs	41 West Street, RH4 1BN	883 327	Antique furniture dealer
Downsman Ltd	156 High Street, RH4 1BQ	880 110	Solicitors and notaries
Ellis Atkins & Co	Overdene, Paper Mews, RH4 2TU 1 Paper Mews, 330 High Street, RH4 2TU	887 023 886 681	Management services Chartered accountants
Fothergills Coffee Lounge	19 St Martins Walk, RH4 1UT		Coffee lounge
Friends Provident plc	Pixham End, RH4 1QA	654 4220	Financial services
Garth House Nursing Home	Tower Hill Road, RH4 2AY	880 511	Nursing home
Hart Scales & Hodges	159 High Street, RH4 1AD	884 432	Solicitors
International Sports Marketing Ltd	Bales Court, Barrington Road, RH4 3EJ	743 322	Marketing consultants
Kuoni Travel Ltd	Deepdene Avenue, RH5 4AZ	840 888	Tour operators
Munro, Ian	10 High Street, RH4 1AT	882 270	Men's outfitters
Newton & Co	Ranmore House, 19 Ranmore Road, RH4 1HE	884 208	Chartered accountants
Patrick Gardner & Co	171 High Street, RH4 1AD	877 775	Estate agents
Penwizard Ltd	Dene Lodge, Cotmandene, RH4 2BN		
Priory School, The	West Bank, RH4 3DG	887 337	School
Rose Hill Nursing Home	9 Rose Hill, RH4 2EG	882 622	Nursing home
Sears, Philip, Designs	18c Horsham Road, RH4 2JD	884 477	Architectural building surveyor
Songhurst, W Ltd	Rayleigh House, Chapel Lane, Westcott, RH4 3PJ	880 411	Builders
Treeline Services Ltd	Chadhurst Farm, Coldharbour Lane, RH4 3JH	741 800	Tree care and maintenance
Uden, C J & Co	The Old Crumpey Factory, 16 Brockham Lane, Betchworth, RH3 7EL	01737 845 451	Building Preservation & Construction
Viscount Agencies	Concept House, 3 Dene Street, RH4 2DR	880 715	Duty free agency
Whitelegg Machines Ltd	Fir Tree House, Horsham Road, Beare Green, RH5 4LQ	713 200	Electrical engineers
Woolcock Partnership Ltd, The	Hulsta Studios, 120 South Street, RH4 2EU	880 330	Furniture retailer and installation
Wyevale Country Gardens	Reigate Road, RH5 1NP	884 845	Garden centre

## OTHER CORPORATE MEMBERS SUPPORTING THE SOCIETY

Abinger Parish Council	Dorking Town Centre Management	Newdigate Parish Council
Amis de Gouvieux, Les	Friends of Boxhill	Ockley Parish Council
Ashcombe School	Friends of Gouvieux	Sir Paul Beresford MP & Lady Beresford
Betchworth Parish Council	Friends of Holmwood	The Dorking Advertiser
Brockham Green Village Society	Headley Parish Council	The Guildford Society
Brockham Parish Council	Holmwood Parish Council	The Reigate Society
Buckland Parish Council	Leigh Parish Council	The Surrey Advertiser
Capel Parish Council	Mickleham Parish Council	Westcott Village Association
Charlwood Parish Council	Mole Valley District Council	Wotton Parish Council
Coldharbour Sports and Social Club		

\*\*\*\*\*

Published by the

**DORKING & DISTRICT PRESERVATION SOCIETY**

Design: HE Assoc. Typesetting: Capricorn Wordprocessing Bureau. Printing: Netherne, Dorking



# **BRAYESTATES**

**PROFESSIONAL PROPERTY CONSULTANTS**

---

**Commercial Property Agency**

**Property Management**

**Investment Opportunities**

**Surveys & Valuations**

[www.brayestates.co.uk](http://www.brayestates.co.uk)

263 High Street, Dorking, Surrey RH14 1RL

Tel: 01306 740837 [office@brayestates.co.uk](mailto:office@brayestates.co.uk)

## **MICHAEL BRAY**

**& ASSOCIATES**

**CHARTERED SURVEYORS**



[www.mbsurveyors.co.uk](http://www.mbsurveyors.co.uk)

Tel: 01306 743347 [office@mbsurveyors.co.uk](mailto:office@mbsurveyors.co.uk)