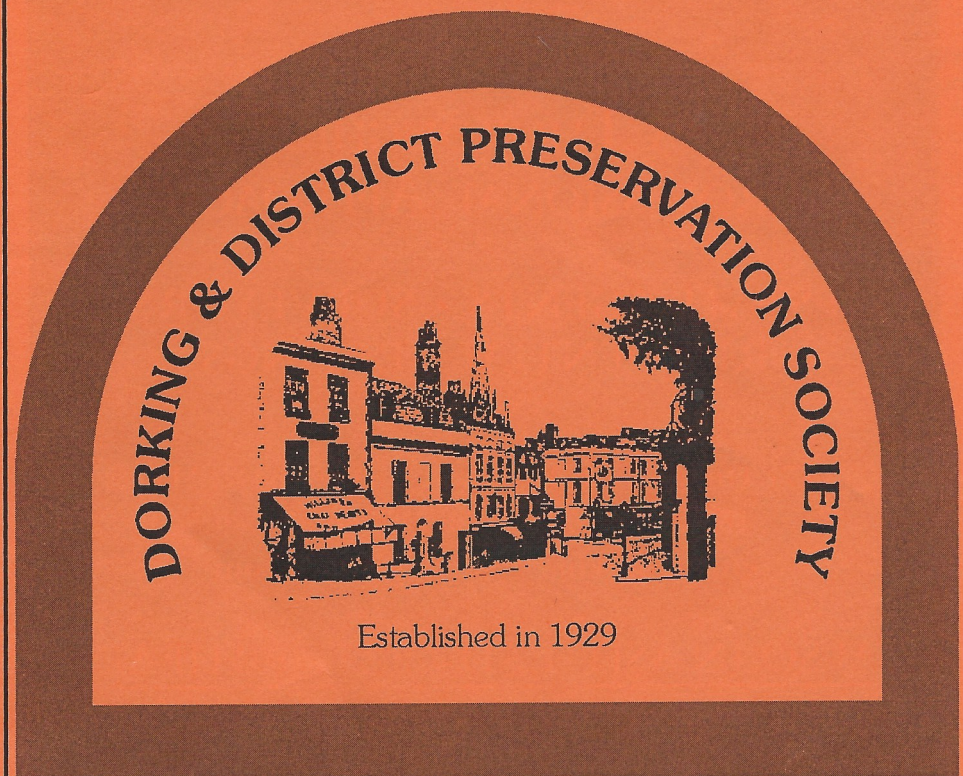


NEWSLETTER

of the Dorking & District Preservation Society

No. 62

Summer 2012



A company limited by guarantee, reg no 5126366
Reg charity no 1107459

in Holmwood Common

Patrick

GARDNER & Co

A THOROUGHLY
PROFESSIONAL APPROACH

ESTATE AGENTS • SURVEYORS
RESIDENTIAL LETTINGS

171 High Street, Dorking, Surrey RH4 1AD
Tel: 01306 877775 Fax: 01306 877780
email: dorking@patrickgardner.com

ALSO IN ASHTEAD, LEATHERHEAD
& BOOKHAM

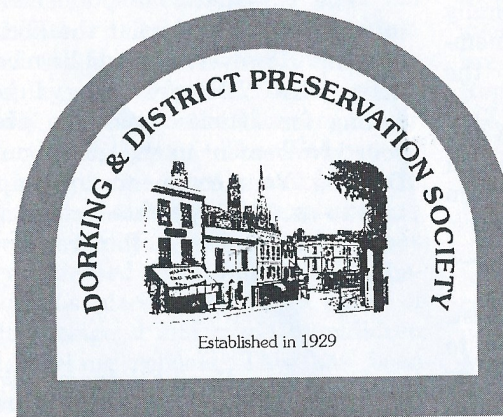
www.patrickgardner.com

NEWSLETTER

of the Dorking & District Preservation Society

Contents

Editorial.....	2
Chairman's Message.....	3
Membership Report	4
Planning Report	5
National Planning Policy Framework	6
A New Start for a New Museum	7
Letters	10
Keeping Dorking's History Alive.....	10
Hannah Peschard's Sculpture Garden.....	11
News & Events	14
Dorking LHG Summer Programme.....	15
Adam Jolyon.....	16



NEWSLETTER 62: Summer 2012
Free to members

Published each April, July and October

Last date for copy to be with the Editor: **1st March, 1st June, 1st September.**

Warning of liability: While every effort has been taken to ensure that all details are correct, the publishers cannot accept responsibility for the accuracy of information in reviews or features, nor for the consequences of any action taken as a result of this information. The views of the contributors do not necessarily reflect those of the publishers.

The Editor welcomes letters and items for publication from members and other readers. All unattributed material is contributed by the Editor.

President:

Adrian White, CBE, DL

Chairman:

Chris Heaps
'Pinecroft'
Ridgeway Road
Dorking RH4 3AP
Telephone:01306-881752

Minute Secretary:

Linda Freshney

Editor:

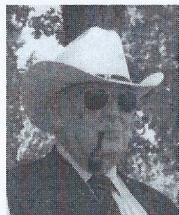
Hank Etheridge
18 The Orchard
Ashurst Drive, Boxhill Road
Tadworth KT20 7LP
Telephone:01737-844379

Membership/Subscriptions:

Jean Pearson
Osbrooks Lodge, Horsham Road
Capel RH5 5JH
Telephone:01306-711043

www.ddps.org.uk

editorial



Before detailing what goodies are in this season's issue, I must talk about the concern the executives and myself have about the increase in second class postage to 50p. When I started in the Society ten years ago, the Newsletter was mostly delivered by hand by volunteers: very few needed mailing. Over the years, due to age, we have lost the majority of the volunteers, so few are now delivered by hand. The rest – 700 plus of them – are now mailed.

As you will see from the News & Events item on page 14, we are trying to reduce the production costs but the printing costs remain the same. We could, possibly, sell more advertising space but that would reduce the number of articles: we try to keep the journal to twenty pages and a four-page cover because of mailing weights. Again, refer to the News & Events page to view your options to receiving the Newsletter. Personally – I am old-fashioned – I think members should be able to enjoy the Newsletter in printed form but, in this age of the internet, some of you may not be too upset to receive it via your computer. Contact Jean Pearson and let her know your preference. Her telephone number is on the Contents page.

Having gotten that off my chest, here are some highlights of items to enjoy in this issue. I spent a morning photographing the re-designed Mu-

seum but fitting out is an on-going process, so all I could do was to give you some idea of the state of play in early June. As we go to press, much more has been achieved but you will have to wait until the Autumn issue to get a more complete picture.

Another picture spread is about the wonderful Hannah Peschard Sculpture garden. I don't doubt that many of you know about it, but have you visited? I found out about it from my daughter, the textile artist Julieanne Long, who has created a piece for the garden. I visited it on a hot Sunday in early June and, as an artist myself, was totally bowled over with the sculptures and how they fitted so beautifully into their surroundings.

Because we currently have no Countryside Officer – any volunteers? – I asked Adam Jolyon to do a Countryside piece to compensate. He said to me when I invited him to write something, "Don't expect me to do this very often. I find it hard enough to walk to the bottom of my garden these days. Even the article I shall write for you will probably be from the seat of my car".

The Newsletter is published to inform members of what the Society is doing. However, it would be nice to know what YOU are doing. I keep asking for articles from you about your involvement in the 'goings-on' in Dorking. Your comments are important to us. The copy date for the next issue is September 1. Pictures would also be welcome.

Hank Etheridge, Editor

Chairman's Message



As I said in my introduction to the AGM at the end of April, the year 2012 will be important not only for the Queen's Diamond Jubilee and the 2012 Olympics in London (and Dorking) but also for the re-opening of the Museum in Dorking. Within its original shell, the Museum has been almost completely rebuilt, and within the budget specified by the Dorking & District Preservation Society ("DDPS"), a budget itself determined by the balance remaining in the Owen Russ Trust which had enabled DDPS to buy the freehold of the building.

When it re-opens in the Autumn – we hope in September but cannot yet guarantee this – the Museum will be unrecognisable. It is now light and airy, and the exhibits will be displayed in a thematic way with the help of advice from professionals experienced in museum activities. Far more so than in the past, the exhibits will be relevant to Dorking, and will include for the first time a display of Wedgwood china generously donated to the Museum by Sir Martin Wedgwood. The Wedgwood's links with the Darwin and Vaughan Williams families will be explained.

In addition, the Museum has been pleased to find space in a conspicuous place to display a panel of tiles designed and made by children in Dorking schools. This has been organised and financed by NADFAS,

and we both hope that this will create an incentive for schoolchildren not only to visit, but to return to, the museum with their appetites whetted for more knowledge of Dorking.

We are fortunate that a new chairman has volunteered to chair the museum committee and to lead the Museum forward at this exciting time. It would be difficult to conceive of a more suitable candidate, and I warmly welcome Nigel Arch to our ranks. Until earlier this year, Nigel was the Director of Kensington Palace where, I am sure, the challenges which he faced will make him well qualified to help us here in Dorking.

Before leaving the Museum, I pay tribute again to Peter Camp – who has overseen the re-building project with meticulous attention to detail – Kathy Atherton, John Steer, Sandra Wedgwood, Erica Chambers, Sue Tombs and all members of their teams.

At the AGM, I added to my Annual Report (published in the Spring Newsletter) by thanking Hank Etheridge for his sterling work in editing and producing the Newsletter three times a year. My attempt to avoid embarrassing him by mentioning him then rather than in the Report which he edits failed miserably, because Hank could not attend the AGM. Accordingly, I repeat them again to the full membership of DDPS.

I am pleased to report that DDPS is reviving its Best Development competition which has been in abeyance following the sad death of Sir Martin and whilst DDPS has been concentrating on the enormous task

of re-opening the Museum. Clive Smith and Sarah Thomas have again agreed to organise the competition which will be open to all buildings extended or completed during 2010 – 2012 inclusive. Further details will follow from the organisers and nominations will be sought early in 2013. If you would like to be involved, please contact Sarah on 01306 881969.

At this exciting times, DDPS may wish to contact its members between the publication dates of the Newsletter. Particularly in the light of the recent increase in postal charges, I invite all members of the Society – if they have not done so already – to supply e-mail details to the Membership Secretary.

I hope that the re-opening of the Museum will be a catalyst for the re-invigoration of the Society, the Museum and the History Group, and I urge more members of the Society and the History Group to become members of both if they are not so already.

Chris Heaps

Membership Report

*Jean Pearson
Membership Secretary*



I would like to thank all those members that I have written to – that is all individual members who have not paid their subscription for some time and have replied giving me details. I appreciate receiving the information, especially now that 2nd class postage has risen to 50 pence.

There are various reasons as to why they have not paid – moved away from the area, not well enough to continue membership (mostly age related) or no longer with us.

I have managed to persuade a number to set-up a standing order and gift aid their subscription, and their forms are now with the Treasurer.

My intention is still to encourage more corporate membership. A number of Parish Councils have responded to my appeal and given generously and I thank them for their support. I am now working towards encouraging local businesses to take out membership and this will be made easier once the new leaflets are in operation.

I think once we advertise ourselves and the public is made aware of our service to the District, this will attract interest and hopefully increase our membership.

A reminder to those who have suggested I include subscriptions – at present it is £10 for individual membership and also currently for family membership – this may change due to accelerating costs. Corporate membership is under discussion – next Newsletter will have further details.

Planning Report



This is my first newsletter update since taking over the chair of the DDPS planning committee from the inimitable Hank Etheridge who decided to stand down at the end of February 2012. I am indebted to Hank for the thorough handover and look forward to continuing to work with him as part of the planning committee and as continuing Editor of the newsletter. I'm sure everyone will wish to join me however in thanking him for his invaluable contribution whilst chair of planning.

At the time of writing Mole Valley DC are awaiting the Secretary of State for Communities and Local Government's decision on whether the Council may determine the Cherkley Court application for listed building consent to convert the house, grounds and associated buildings to a hotel including a golf course. After long and detailed discussions across two development control committee meetings, the officer's recommendation to refuse the golf course element was overturned by councillors and the scheme is therefore likely to be approved if the Department gives the green light for the case to be determined locally. The Ministry still has the power to reject the proposals but whatever the outcome, the final decision is likely to be well publicised throughout the District.

The other significant application currently under consideration is the restoration of the William Mullins house at 58-60 West Street, including conversion of the upper floors to three flats. Perhaps more controversial is the

'enabling' two-storey, three-bedroom detached house which it is proposed be constructed in the grounds at the rear of the property following demolition of an existing small (admittedly dilapidated) workshop. Amended plans for this new house have recently been submitted and further comments invited by MVDC.

Letters on behalf of the society were submitted in relation to an application for a proposed development of four new houses and associated parking to replace one house, Dunkeld, in Roman Road. We felt this would be overdevelopment and not in keeping with the street scene, and this view appeared to be echoed in comments made by some neighbours. This application has now, however, been approved with conditions by the development control committee of 6 June.

Attempts at 'garden grabbing', now specifically discouraged by Government within the National Planning Policy Framework (the NPPF), continue locally with an appeal being lodged against refusal of a new house rear of Nutcombe House on Westcott Road, Dorking. Meanwhile applications have been submitted for a dormer bungalow on back garden land belonging to No.'s 11 and 13 Nutwood Avenue, Brockham and for a new house and garage in the garden behind Eden Lodge on Westcott Road, Dorking.

The number of applications appears to have risen recently as predicted, following introduction of the NPPF, and the committee has also noticed an increasing trend amongst applications to test the very limits of design and Green Belt protection policy by way of large extensions and outbuildings.

*Elaine Simmons, Chair,
Planning Committee*

The Implications of the Government's decision to introduce the National Planning Policy Framework (NPPF)



There is a considerable amount of concern that the new catalogue of planning rules embodied in the approved NPPF will not prove to be an effective or efficient conveyor of a decision framework that will support local priorities or convey the much-vaunted localist agenda.

Advice contained in the NPPF provides that where there is no fully examined and thereafter adopted Plan, 12 months will be allowed for planning authorities to give full weight to policies adopted since 2004, even where there is a limited degree of conflict with the precepts of the NPPF. After 12 months, and in other cases, i.e. more than limited conflict, the NPPF gathers more weight. Due weight will be given to existing plans according to the degree of consistency with the NPPF. This interpretation means assessing the degree of conflict in order to understand the seriousness of the departure from the NPPF. The DCLG response to this problem is that local authorities should be free to interpret the NPPF in line with local priorities. Does this mean, however, that a 'local' "No" will outweigh the national presumption in favour of sustainable development?

Clearly the amount of interpretation in the absence of a fully endorsed plan must be considerable where tensions between the NPPF and Localism mean that decisions are not made in the context of an emerging local plan. In much of the introduction of the localist 'agenda' in the Localism Act there is must that will have to be

worked out in clarifying the limits of the various weighting that has to be applied before the NPPF rules will catch up with the patchy local plan situation throughout the country.

In a survey of the NPPF requirements for local authorities to protect England's Heritage, the NPPF emphasises the requirement to protect an area's heritage. There must be a positive strategy to conserve and develop access to the historic environment. These assets are irreplaceable and their conservation is important. Such heritage assets and their settings should not be left out of the process to compile a plan framework. Account must be taken of enhancing significant heritage and putting these to a viable use consistent with their conservation. When involved in development, weight should be given to an asset's conservation. The avoidance of substantial harm to an asset must be weighed against the public value of the heritage in obtaining optimum viable use. A plan's canvas must include up-to-date relevant evidence of the local historic environment.

Along with the economic and environmental content of the framework plan, an area's historic heritage strategy is also needed to complete the plan coverage. In itself, the positive aims of conservation, preservation and development of the area's historic environment must be a part of the plan. Given the available resources, such assets often lack the necessary input that would guarantee this approach. Let us hope that in Mole Valley this subject area will not be forgotten.

*Derek Rowbotham
Vice Chairman & Planning Policy*

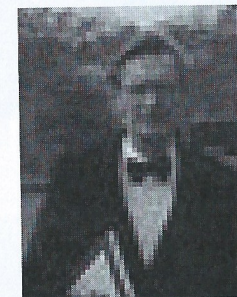


Something extraordinary is happening behind the gleaming white walls of a building just off West Street in Dorking. A team of enthusiastic volunteers is creating a Museum for the 21st century. They are possessed with an array of experience and are riding a wave of energy that will sweep difficulties before them, leaving behind a place of learning and discovery which will appeal to everyone. As I am sure DDPS members will know, the idea of a museum in Dorking was first mooted in 1939 but in fact it was not until 1976 that the museum opened. Early in the present century, thanks to a generous bequest, it became possible to conceive of a new approach – not only to the display of the wonderful collections – but in the way those collections can be made to live for the residents of and visitors to Dorking.

We are now well advanced along a path which will see the new museum open its doors in mid-September. The internal fit-out is nearing completion and the first cases and plinths for the objects have arrived. Crucially, the artefacts which will be shown in the initial displays are now back from storage and are being assessed for conservation prior to treatment where this is required. At the same time, the education and outreach programmes are being finalised: they are the key

A new start for A new Museum

to the whole enterprise, a way of reach out not only to young people but to the wider community. Only this week, the Museum committee approved modest expenditure for a reproduction 17th century dress which will bring the past to life for our school groups. Expect, too, more stories about the Museum in print and electronic media as we push our message out to the wider world.



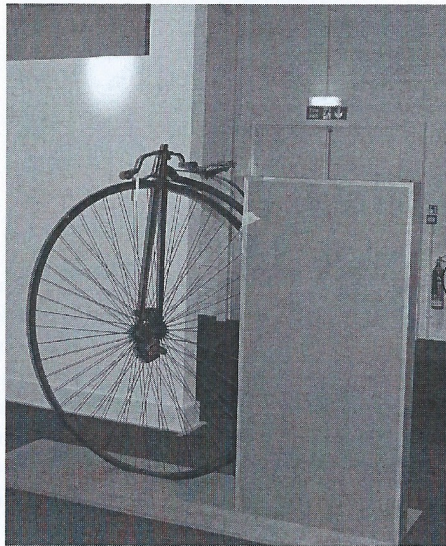
who am I?

By now, you may well be wondering who the author of this piece is – so let me, in closing, tell you a little bit about me. I spent the whole of my

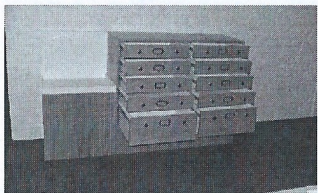
career in museums and historic houses, in both curatorial and management roles, retiring this April as Director of Kensington Palace. I enjoyed every minute and I am sure I shall enjoy every minute of my time with Dorking's DDPS Museum. I love objects and I love visitors – museums are where we bring the two together to start a voyage of discovery.

*Nigel Arch LVO., MA
Chairman,
DDPS Museum Committee*

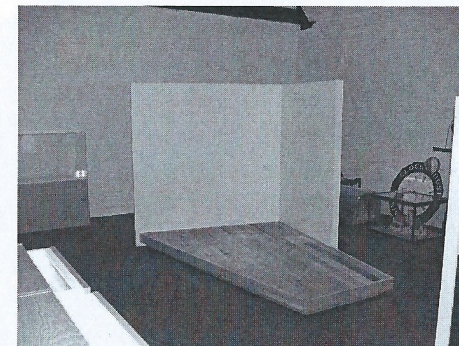
Well, you have now been introduced to the new chairman of the museum, whom we are most fortunate to have gained. Now, I present a small Photo Essay of the state of play at the museum as of June 8th. Most of the display cabinets have now been delivered and some artefacts installed. The route that visitors will be led around consists of 'themed' sections covering most aspects of Dorking's history. These include the Iguanodon tail, the Ashcombe fossil collection, churches, transport, cricket and so on. Upstairs, the paper archives are being indexed and filed ready for researchers to use.



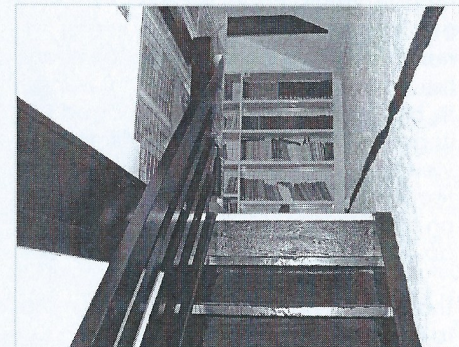
*(Above) The Pennyfarthing
(Left) The Ashcombe collection Cabinet
(Below) A pillar from the old Dorking North station*



(Above) The Dulcitone, used by choir-master William Cole as a sort of tuning fork



(Above right) The island display unit for the churches theme



(Right) The refurbished stairway to the Archives

(Below) The smart, new Archive Research Area



LETTERS

Dear Mr Etheridge,

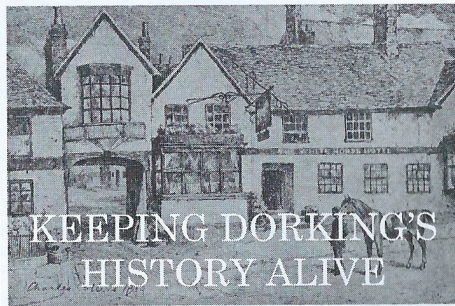
Support for Lidl

I was sorry to read of your "chiding" by Margaret Cooksey for supporting the Lidl store in Vincent Lane. It needs to respect the concerns of residential neighbours but, in business terms, I would agree with your endorsement of an 'economy' supermarket which has received the support, in particular, of out of town shoppers. As a source of new money it cannot hurt the town, and the town centre may or may not benefit, but it surely cannot be damaged by its presence. To that extent, I refute the view of the Society's Planning Committee that its location will have an "impact on the High Street". No it won't; life will go on.

The Council has itself a good deal more to answer for. With the addition of 2,300 sq m of convenience shopping (Waitrose expansion plus Lidl), together with the existing Sainsbury's store, Dorking has all the supermarket options it needs, and some. Yet MVDC seems so obsessed with what it sees as a failed town centre that it is determined to indulge Sainsbury's desire to relocate behind St Martin's Church despite the damage this will do to all the interests currently there. If this goes through the only beneficiary will be the superstore. Dorking has a long thin High Street and its residents have only so much money to spend. The outcome is the vacant shops which have been in the town for all of the last 40 years. Putting Sainsbury's into St Martin's will not turn Dorking into Reigate, nor is that a neighbour we have any need to envy.

Yours sincerely,

Michael Benoy



- Could you support your local community in keeping its unique character and history alive?
- Could you help engage visitors and locals and promote Dorking and its history?
- Can you spare four hours a fortnight?
- Would you like to be part of a community-run project and gain hands-on experience in a unique setting?

Dorking Museum will be reopening in September but can only do so with a team of enthusiastic Volunteer Visitor Assistants. It is a Museum entirely supported through donations and volunteers. Volunteering is open to anyone aged 16 – 60, whatever your background and experience – you do not need to be an expert in local history! Full training and support will be provided.



If you would like to be part of this exciting project, or like further information, please contact Nicole Gerrard on 01306 876591 or email: nkgerrard@googlemail.com.

Hannah Peschard's beautiful Sculpture Garden in Ockley

Standing in 10 acres of dramatic plantings, the contemporary sculptures enhance rather than distract from the flowers and greenery

Hannah Peschard and her landscape designer husband, Anthony Paul saw the Black & White Cottage in Standon Lane, Ockley, advertised in the Sunday Times one balmy Sunday morning, in their two up, two down very neglected house in Barnes, London. They had already worked hard to make this house attract attention by creating a garden with giant Hogweeds, a hidden corner for sun



bathing and removing some paving stones from the front of the building to plant a flowering cherry tree that has since been given a Tree Preservation Order.

However, they had always wanted a much larger garden, hence the interest in the Ockley property.

They visited the cottage with its 10 acre garden, immediately fell in love with it and bought it with a private mortgage from the owner, because no one else wanted it. It was wild, messy, too isolated and too much in danger of flooding. It required lots of work to be done with it but discovering a *Gunnera Manicata*, not seen by the owner for the last twenty years, clinched it.

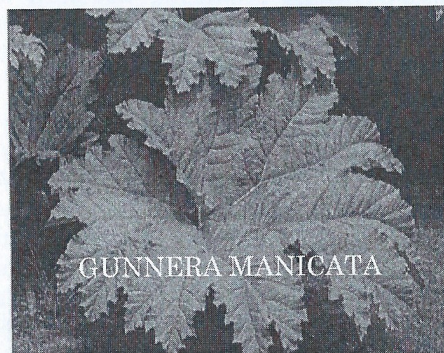
Hannah and Paul moved in. Two years later, someone suggested to them that the Surrey Domestic Buildings Research Group should be asked to properly date the cottage. Holes were drilled in one of the main supporting beams and the plugs sent away (to Japan) for dating. The National

Lottery Heritage Fund supported this Dendro-chronology project. The result was that the three timbers were felled in the winter of 1607/8, indicating that the construction began in 1608. Tentative evidence also suggested that the chimney was inserted in around 1691. They had themselves an old smoke bay house, now listed as Grade 2.



Anthony Paul modestly re-landscaped the garden, and the Standon brook was tamed, removing the threat of flooding. The garden literarily 'blossomed'.

After some further research, it was discovered that the garden and cottage were part of the large Leith Vale estate that was landscaped and treasured by a Mr Derek Trotter sometime in the 1920's, when Mr Trotter was the treasurer of the Royal Horticultural Society.



GUNNERA MANICATA

The garden begged for art and the garden was opened to the public in 1984 with the first sculpture exhibition that set the style for future exhibitions. Instead of going for the same old, somewhat boring, figura-

tive sculptures in bronze and stone, Hannah chose contemporary sculpture to widen the horizons for young, emerging sculptors with new ideas and the use of new materials as well. Over the years, Hannah discovered how many very talented artists live and work in the UK. This year, for the first time, the garden will feature the work of a textile artist who makes art using discarded plastic bottles, screw top lids and other found materials.

In 1996 HRH Prince Charles opened a special exhibition of work by the Hungarian sculptor, Laszlo Marton. Publicity about this Royal visit was noticed by Sir Martin Wedgwood who came with Lady Sandra for a visit. Both became great admirers of the sculpture garden and Sir Martin honoured Hannah and Paul by making the best speech ever, opening a special exhibition in fired clay and glass.



The garden is open to the public at weekends. Special viewings for groups during the week by arrangement

Tel: 01306 627269

The garden is adjacent to Gatton Manor Golf Club

NEWS & EVENTS

BEST DEVELOPMENT COMPETITION

We have had a few hiccups along the way with the competition but are glad to say we are once again on track to hold it next year. Clive Smith will be the Chairman of the panel of judges who include two architecturally savvy members of the Society, two from Mole Valley and a representative from the Dorking Advertiser. There are already two excellent contemporary buildings and one renovation among next year's competitors.

OUR APPLICATIONS PLANNING COMMITTEE

We are looking for two other members to join this committee. All that is involved is to join the meetings at Mole Valley offices every Wednesday morning for around two hours. An interest in architecture is all you require but it would be a bonus if you have had a background in surveying or building. Please contact Derek Rowbotham if you would like to get involved (01306 887445).

THE NEWSLETTER

As you will have read in the editor's piece, the increase in the cost of second-class stamps is going to add to the cost of producing the journal. In consultation with the production unit, Mr Etheridge has managed to reduce production costs but printing costs will remain the same. The Newsletter appears on the Society's website at the same time that it is e-mailed to the printers. If you are not particularly bothered about receiving an actual, printed copy, then you can enjoy the journal in full colour, although downloading it will not produce an actual magazine – just individual one-sided A5 pages. Please contact Jean Pearson if you are happy to do this (01306 711043). For those of you who still prefer a printed copy to pass around to your family and friends, the Society is exploring ways of reducing the mailing burden. On the other hand, if you feel that you could deliver copies in your locality, please contact John Ball (01306 898353).

THE AUTUMN MEETING

At the time of going to press, we have not arranged a venue or date. However, we do have a speaker: Nigel Arch, ex-director of Kensington Palace, and now chairman of the DDPS Museum.

DORKING LOCAL HISTORY GROUP



Meetings & Outings organisers

These two positions are now vacant. So far, no one has yet come forward to replace them. The retiring folk organised the summer programme but November/winter speakers need to be announced in early October. This means that the programme has to be printed in September and all speakers booked before that date. We must fill these vacancies soon in order for the Group to continue. Is there anyone of you who could take on this role? – please!!

SUMMER PROGRAMME 2012

AUG. 7 Walk and Talk Milton Street
Peter Bennett
(Meet 7pm Westcott Cricket Club Car park)

SEPT. 4 The growth of Railways around Dorking and Leatherhead
Peter Tarplee

OCT. 2 Emma Darwin
Linda Heath

Meetings are held at the Friends' Meeting House, Butter Hill, South Street, usually on the first Tuesday of the month at 7.30pm.

DONATION FORM

DORKING & DISTRICT PRESERVATION SOCIETY

I want to help refurbish and refit the Dorking Museum and Heritage Centre.

Please find enclosed a donation of

£.....

Name.....

Address.....

.....

.....

.....Post Code.....

*Please make your cheque payable to:
DDPS Museum Reconstruction Fund.
Send to: Alan Loryman, Dorking Museum,
62 West Street, Dorking RH4 1BS*

If you would like to receive more information about other ways to help, or become a volunteer, please tick box

Email:.....

Telephone Number:.....

I am a UK taxpayer currently paying income tax or Capital Gains tax that is at least equal to the tax deducted from my donation. I should like the Dorking & District Preservation Society to claim back the tax on this gift and any future gifts until further notice.

Signature

Date

If you would like a receipt, tick here

Registered Charity No. 1107459 Trustees: The Council of the Dorking & District Preservation Society

You top the rise, and there are the Surrey Hills spread out before you...

This was my first experience of the area around Leith Hill and Coldharbour Lane. The editor had asked me to do a piece about the countryside in the absence of a DDPS Countryside Officer. "OK!", I said, "but I shall do it from my car: I'm too old to go gallivanting about in the wilds. I did all that in my youth in my beloved Hampshire".

Hank had said that he was visiting the Sculpture garden in Ockley, so on the Monday morning I set my Sat-Nav to the postcode of Gatton Manor Golf Club and off I went. I had expected it to guide me on to the A24 and then onto the Ockley Road. Instead the voice took me through Dorking, onto South Street

then into Coldharbour Lane. From there it directed me through dark Cuttings, past a pub and into Coldharbour itself. The houses, which were all of different designs and finished, impressed me, but I drove on.

At one place, through the hazy sunshine, I could see for miles the downs and fields full of Rape, but it was further on that took my breath away: I was in a stand of tall Redwoods, the scent of which drifted through my open window. From there, I passed old churches, walled gardens and, through high-hedged lanes, some spectacular pubs.

I expect many of you have made this trip but, if you haven't, it's well worth the effort. There are lots of places to have a picnic and hostelrys in which to 'wine and dine'.

Adam Jolyon

EXPERIENCED, RELIABLE & INSURED

HANDYMAN

References available

- Professional Maintenance & Repairs
- Exterior & interior decoration
- One off jobs or termed Contracts
- Property Security while you are on vacation



Service covers Dorking & surrounding villages. Special terms for disabled

**Call Kenneth Jacobs on:
01737 842839 8am – 9pm**

CORPORATE MEMBERS SUPPORTING THE SOCIETY

Please note that all addresses are of Dorking town and all telephone numbers have the code 01306 unless shown otherwise.

Name	Address	Tel.	Business type
ADV (UK) Ltd	The Old Crumpet Factory, 16 Brockham Lane, Betchworth, RH3 7EL	01737 845 450	Building Preservation & Construction
Antony Wakefield & Co Ltd.	Suite C, South House, South St RH4 2JZ	740 555	Fine Art & general insurance brokers
Betchworth Park Golf Club	Reigate Road, RH4 1NZ	882 052	Golf club
Bray Estates	278/280 High Street, RH4 1QT	740 837	Professional property consultants
Bullimore's	Old Printers Yard, 156 South Street, RH4 2HF	880 880	Chartered accountants
Burley, G & Sons	Burley Corner, Moorhurst Lane, S.Holmwood, RH5 4LJ	711 799	Amenity horticulturist
Carrington (1953) Ltd	5 Stacey's Meadow, Elstead, Godalming, GU8 6BX	883 849	Antique furniture & interior design
Christique Antique Centre	11 West Street, RH4 1BL	883 340	Electrical contractors/shop
Clear, S J & Co Ltd	65 High Street, RH4 1AW	886 622	Solicitors
David Cowan	114 South Street, RH4 1AW	883 327	Antique furniture dealer
Dorking Desk Shop, The Downs	41 West Street, RH4 1BN	880 110	Solicitors and notaries
Downsman Ltd	156 High Street, RH4 1BQ	887 023	Management services
Ellis Atkins & Co	Overdene, Paper Mews, RH4 2TU 1 Paper Mews, 330 High Street, RH4 2TU	886 681	Chartered accountants
Fothergills Coffee Lounge	19 St Martins Walk, RH4 1UT		Coffee lounge
Friends Provident plc	Pixham End, RH4 1QA	654 4220	Financial services
Garth House Nursing Home	Tower Hill Road, RH4 2AY	880 511	Nursing home
Hart Scales & Hodges	159 High Street, RH4 1AD	884 432	Solicitors
International Sports Marketing Ltd	Bales Court, Barrington Road, RH4 3EJ	743 322	Marketing consultants
Kenneth Jacobs	Box Hill	01737 842 839	Insured Handyman
Kuoni Travel Ltd	Deepdene Avenue, RH5 4AZ	840 888	Tour operators
Munro, Ian	10 High Street, RH4 1AT	882 270	Men's outfitters
Newton & Co	Ranmore House, 19 Ranmore Road, RH4 1HE	884 208	Chartered accountants
Patrick Gardner & Co	171 High Street, RH4 1AD	877 775	Estate agents
Penwizard Ltd	Dene Lodge, Cotmandene, RH4 2BN		
Priory School, The	West Bank, RH4 3DG	887 337	School
Rose Hill Nursing Home	9 Rose Hill, RH4 2EG	882 622	Nursing home
Sears, Philip, Designs	18c Horsham Road, RH4 2JD	884 477	Architectural building surveyor
Songhurst, W Ltd	Rayleigh House, Chapel Lane, Westcott, RH4 3PJ	880 411	Builders
Treeline Services Ltd	Chadhurst Farm, Coldharbour Lane, RH4 3JH	741 800	Tree care and maintenance
Uden, C J & Co	The Old Crumpet Factory, 16 Brockham Lane, Betchworth, RH3 7EL	01737 845 451	Building Preservation & Construction
Viscount Agencies	Concept House, 3 Dene Street, RH4 2DR	880 715	Duty free agency
Whitelegg Machines Ltd	Fir Tree House, Horsham Road, Beare Green, RH5 4LQ	713 200	Electrical engineers
Woolcock Partnership Ltd, The	Hulsta Studios, 120 South Street, RH4 2EU	880 330	Furniture retailer and installation
Wyevale Country Gardens	Reigate Road, RH5 1NP	884 845	Garden centre

OTHER CORPORATE MEMBERS SUPPORTING THE SOCIETY

Abinger Parish Council	Dorking Town Centre Management	Newdigate Parish Council
Amis de Gouvieux, Les	Friends of Boxhill	Ockley Parish Council
Ashcombe School	Friends of Gouvieux	Sir Paul Beresford MP & Lady Beresford
Betchworth Parish Council	Friends of Holmwood	The Dorking Advertiser
Brockham Green Village Society	Headley Parish Council	The Guildford Society
Brockham Parish Council	Holmwood Parish Council	The Reigate Society
Buckland Parish Council	Leigh Parish Council	The Surrey Advertiser
Capel Parish Council	Mickleham Parish Council	Westcott Village Association
Charlwood Parish Council	Mole Valley District Council	Wotton Parish Council
Coldharbour Sports and Social Club		

Published by the

DORKING & DISTRICT PRESERVATION SOCIETY

Design: HE Assoc. Typesetting: Capricorn Wordprocessing Bureau. Printing: Netherne, Dorking

BRAYESTATES

PROFESSIONAL PROPERTY CONSULTANTS

Commercial Property Agency

Property Management

Investment Opportunities

Surveys & Valuations

www.brayestates.co.uk

263 High Street, Dorking, Surrey RH14 1RL

Tel: 01306 740837 office@brayestates.co.uk

MICHAEL BRAY

& ASSOCIATES

CHARTERED SURVEYORS



www.mbsurveyors.co.uk

Tel: 01306 743347 office@mbsurveyors.co.uk