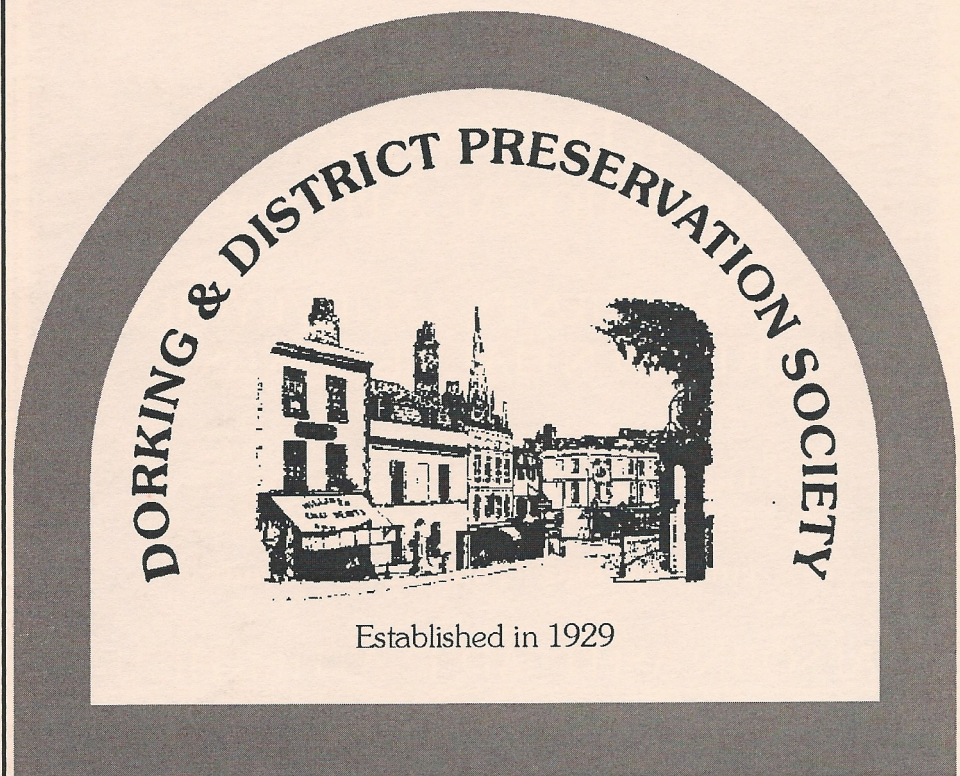


NEWSLETTER

of the Dorking & District Preservation Society

No. 63

Autumn 2012



Established in 1929

A company limited by guarantee, reg no 5126366
Reg charity no 1107459

... on Holmwood Common

Patrick
GARDNER & Co

A THOROUGHLY
PROFESSIONAL APPROACH

ESTATE AGENTS • SURVEYORS
RESIDENTIAL LETTINGS

171 High Street, Dorking, Surrey RH4 1AD
Tel: 01306 877775 Fax: 01306 877780
email: dorking@patrickgardner.com

ALSO IN ASHTEAD, LEATHERHEAD
& BOOKHAM

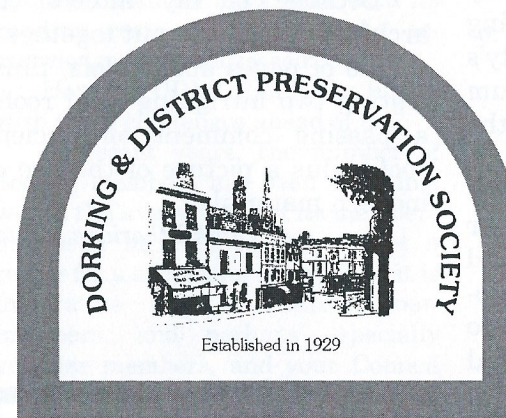
www.patrickgardner.com

NEWSLETTER

of the Dorking & District Preservation Society

Contents

Editorial.....	2
Chairman's Message.....	3
Planning Report.....	5
Membership Report.....	6
Annual General Meeting Notice.....	7
The roof over your head.....	8
Dorking Museum & Heritage Centre.....	11
Dorking Local History Group.....	14
News & Views.....	15
Dorking Decorative & Fine Arts Society Young Arts Museum Project.....	16
Betchworth Castle Lecture.....	19



NEWSLETTER 63: Autumn 2012
Free to members

Published each April, July and
October

Last date for copy to be with
the Editor: 1st March, 1st June,
1st September.

Warning of liability: While every
effort has been taken to ensure
that all details are correct, the
publishers cannot accept res-
ponsibility for the accuracy of
information in reviews or fea-
tures, nor for the consequences
of any action taken as a result
of this information. The views of
the contributors do not neces-
sarily reflect those of the pub-
lishers.

The Editor welcomes letters and
items for publication from
members and other readers. All
unattributed material is contrib-
uted by the Editor.

President:

Adrian White, CBE., DL

Chairman:

Chris Heaps
'Pinecroft'
Ridgeway Road
Dorking RH4 3AP
Telephone:01306-881752

Minute Secretary:

Linda Freshney

Editor:

Hank Etheridge
18 The Orchard
Ashurst Drive, Boxhill Road
Tadworth KT20 7LP
Telephone:01737-844379

Membership/Subscriptions:

Jean Pearson
Osbrooks Lodge, Horsham Road
Capel RH5 5JH
Telephone:01306-711043

www.ddps.org.uk



There is a crazy acquaintance of mine that insists that the Mayan Calendar says that the world will end in December 2012. He, of course, misinterprets the Calendar which really states – as far as the Maya were concerned – that it is the end of their world. Mind you: what with the dreadful summer it has been, and with Hurricane Isaac in the Gulf, plus a ‘swarm’ of earth tremors along the San Andreas Fault, it gave me pause.

As you will see, the Museum is well on its way to re-opening. I spent a morning there photographing some of the displays taking shape, and Nigel Arch contributes the words.

In conjunction with the Museum, there is also an article by Sue Tatham about the Dorking Decorative and Fine Arts Society’s (DDFAS) Young Arts Museum Project, illustrating some of the highly creative works done on tiles by local school children.

Jean Pearson contributes her usual Membership Report and now adds Planning to her portfolio since Elaine Simmons had to give it up because of personal reasons. I am still a member of

the Planning Group on Wednesday mornings at Pippbrook and appreciate the wealth of knowledge Jean brings to the task. She’s also fun to work with, to boot.

I received a letter from a member who asked that the Society’s Strategic Planning reports be written in ‘Plain English’ so that members like himself who were ‘planning virgins’ could understand the current state of play of the Government’s Plans. I will try to write about the subject in journalese. I apologise, in advance, to Derek Rowbotham if I get it wrong.

I have also included a small News & Views page to highlight some of the Internet and telephone scams currently doing the rounds. I was nearly caught by the telephone call I received about my computer not working. Be aware that there is always someone on the Internet who wants your money.

Because of my interest in architecture, I have put together a couple of pages about roofs, illustrating two intriguing local roofs; a passing comment on ancient roofs, plus a picture of the use of modern materials.

Hank Etheridge, Editor

Chairman's Message



THE FUTURE OF DDPS ?

The next twelve months will be an exciting time for the Dorking & District Preservation Society, not least because our Dorking Museum will be re-opening in the very near future, and within budget !

A “soft” opening is planned for the end of September or thereabouts and details will be published in the local newspapers and sent to every member who has provided an e-mail address. A formal opening will follow, probably in November, and I am pleased to report that the Lord Lieutenant of Surrey – Dame Sarah Goad DCVO – has agreed in principle to perform the opening ceremony. This will be particularly appropriate because the original museum was opened in 1976 by the then Lord Lieutenant, Lord Hamilton of Dalzell.

The Museum is DDPS’ greatest asset, and a great asset to Dorking, but the liabilities associated with its running costs will have to be acknowledged and addressed.

How can DDPS plan for its future with these challenges ahead of us ?

In recent years, the number of Society members has been dropping, whilst the average age of its members has been increasing. This is not a recipe for a successful future, and it is imperative that we attract new members, and perhaps especially younger members, and your Council has decided that a root and branch

review of DDPS’ activities is required. A working party has been set up to consider the future of the Society, and I invite all members to write to me with suggestions for consideration by the working party and to help us to think the unthinkable.

Questions to be asked could include the following:-

1. Should the aims and objects of the Society be amended and updated to meet the needs of the 21st. Century? In short, what should the Society be doing?
2. Should the activities of the Society, including the Museum and the History Group, be better integrated?
3. How can the Society raise its profile with the town and in the surrounding district and thereby attract new members?
4. Does the name – Dorking & District Preservation Society – give the impression that it is a backward looking body rather than a body committed to the future of the town?
5. If so, should a change of name be considered, perhaps (as in Guildford and Reigate) to The Dorking Society?
6. How can the Society improve its links with other local relevant bodies, such as local schools, Scouts, Guides, Rotary Clubs etc.?
7. Should the DDPS management arrangements be amended to include representatives from such bodies on an expanded Council, but with more responsibility being given to a strengthened Executive Committee?

8. How can our educational activities be improved, especially for the young? This is particularly important if our charitable status is to be preserved.
9. Should the Newsletter (currently published three times a year) be modernised into a production in colour on a larger page size, perhaps distributed only once a year but incorporating a greater input from the Museum and the publication of the learned papers currently published by the History Group?

There is no magic answer to these questions, and again I invite members to suggest further questions for consideration by the working party. In due course, it will produce a paper for consideration by the Council and thereafter by members at an AGM.

The following have agreed to join me on the working party – Nigel Arch (representing the Museum); Peter Camp (representing the History Group); and Jane Lecluse (who organises the learned papers for the History Group magazine). It is important that the working group be limited in size, but if any member believes that he/she has skills which would assist us please do not hesitate to let me know on heaps@waitrose.com.

When the Society was founded in 1929, at a time when the country was seeking to address the problems of a period of economic recession by uncontrolled building development, the overriding need was to ensure that such spread of suburbia should not swamp Dorking. In 2012, under the National Planning Policy Framework (“NPPF”) introduced by the Coalition Government, the threat to

the Green Belt and all the countryside surrounding Dorking is just as great. One of the key functions of the Society must remain its ability to appraise strategic planning implications of any proposals which could cause harm to the character of our district and to make representations when appropriate, whether to Government, Mole Valley District Council or to a planning inspector when an appeal has been lodged.

If there are any members with planning law and policy experience who would like to help DDPS, please get in touch with me, as I can foresee the danger of developers using the NPPF as a ground for seeking planning permission throughout our district. Indeed, one such possible development has already been announced in Strood Green.

I have referred above to the age profile of members and for the need for younger volunteers. However, age is not a bar, and I stress that there is no upper age limit for volunteers in the Museum. The age limit mentioned in the last Newsletter was a mistake, for which DDPS apologises.

Society cannot stand still, and DDPS is no exception. Let us grasp the opportunity given by the re-opening of the Museum to seek to reinvigorate the Society so as to ensure its, and the Museum’s, future and to assist with the health of our town.

A new “image” is needed to bring DDPS’ activities to the notice of Dorking, and we need to re-evaluate our activities to meet the current needs of Dorking in the 21st. Century.

Chris Heaps

Planning Report



Due to business commitments, Elaine Simmons, the newly appointed Chair of the Planning Committee, has not been able to continue in this post since the end of June. We wish her well in her new employment.

There has been little to report that is interesting other than the Secretary of State’s decision not to call in the application on Cherkley Court. We are now waiting for the Conditions, which we understand are quite extensive, before work can commence. No information is available at the time of compiling this report.

Very few of the applications have been controversial or difficult. There was a recent application to test public opinion about the consideration of access to land at Kiln Lane, Brockham to build 45 dwellings – 20 being ‘Affordable’. Our committee considered this an inappropriate development within the Green Belt, the proposed site being totally unacceptable for so many houses in a countryside situation, and which could prove hazardous to traffic movements on a narrow lane and affect the open setting on the outskirts of the tranquil village community of Brockham.

Although the number of applications have been few, they are,

none the less, important to the resident making the application, ensuring it meets the necessary planning requirements and that neighbours are able to continue harmonious life together in our beautiful part of Surrey.

Our Planning Committee intends to continue serving the members of the Dorking & District Preservation Society to the best of its ability, and to study the National Planning Policy Framework (NPPF) in order to make sensible judgements in its deliberations which will benefit our community and surrounding countryside for future generations.

The Committee meets each Wednesday morning in Pippbrook – main office of Mole Valley District Council. We have access to planning officers’ files and are able to deliberate on all aspects of each planning application. If you have an interest in Planning and Architecture for all new building, alterations and extensions to domestic and commercial properties, please come and join our Committee. We meet at 9.15 am, and tend to finish around 10.30am.

YOU WILL BE MOST WELCOME

*Jean Pearson,
Planning Chairman*

Membership Report

Jean Pearson
Membership Secretary



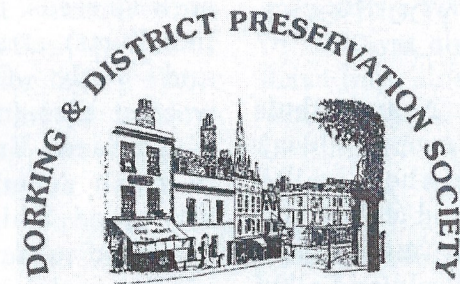
By the time this report goes to print, there will be a new leaflet about the Society, the Museum, Planning aspects and how one is able to join and become a member. It is an exciting time in our history, with the recent refurbishment of our Museum, an official opening and the opportunity to make use of all the facilities available to members. We hope to encourage more local residents to become members of a vibrant Society who are prepared to give some of their time by volunteering and working on behalf of the Society and the area in which we live, when time permits.

Membership is still in a state of flux, but I hope that by the time the next edition of this magazine is published, I shall have some good news about an increase in membership and that all will be paying their subscriptions by Standing Order, giving it through the Gift Aid process. This allows us to benefit from the money given to the Society.

Corporate membership is still a front runner in my endeavours, and I hope to persuade more of them to join us, not only to help an historic Society that has existed for over eighty years within Dorking, but also to take advantage of our ever growing facilities in the newly restored and renovated Museum. More details on this in future editions.

A gentle reminder that all subscriptions are due in January of each year. Although some members have made alternative arrangements to pay their subscriptions, which is currently £10 for both individual and family membership, I am, however, quite happy to accept membership at any time suitable to new members. If you would like to comment on this, I look forward to hearing from you.

If you have an e-mail address, please forward it to me on jeanosbrooks1@aol.com. We want to make use of up-to-date technology to enable contact between members and the officers of the Society. We do have a 'contact us' button on our website: www.ddps.org.uk.



Established in 1929

The Annual General Meeting
of the Society
will take place on
Friday November 16 at 7.30pm
in

**Friend's Life Social Club,
Pixham Lane**

Chairman Chris Heaps will review this
year's work of the Society

*After the formal meeting there will be
an interval for refreshments*

Followed by an illustrated talk by
Nigel Arch
Museum Chairman
on
**Servants, Mistresses, Scoundrels
& Princesses – secret stories of
Kensington Palace**

The roof over your head

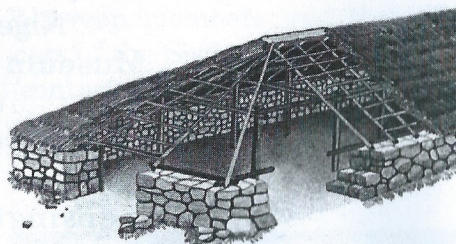
By Hank Etheridge NDD.,ATD

The two, male Neanderthals slowly shuffled over a bleak landscape. Behind them trailed their womenfolk and children. It is raining with intermittent sleet. It is bitterly cold and all of them look thoroughly miserable. One of them grunts and makes hand signs to his companion. He is saying "We gotta get a roof over our heads". The other male nods agreement and then points to a hole up in the rock face. "That might be what we are looking for", he signs. They were about to become 'Cavemen'.

Throughout the ages that followed, humans have strived to have better roofs over their heads. Mammoth tusks, whale-bones and rough wooden frameworks were covered by a variety of materials, from tropical leaves to animal skins. Later, other solutions were conceived,



(Below) A Scandinavian Farmhouse with a turf roof
(Left) An Anglo Saxon thatched Hall



Pictures courtesy of Author, Philip Dixon & Book Club Associates, London

such as reeds, turf, felt (Mongolian Yurts), straw thatch (Celtic and early Germanic), thin wooden tiles (northern Europe, Anglo Saxon England, and later in north America, where they are called 'Shingles'). In more advanced cultures, moulded clay or stone slab tiles were used over stone structures (Egypt, Greece, Rome, Greece, China, Anatolia and Mexico).

In this country, since medieval times, clay tiles, thatch and slate have been the main materials for roofing. However, from Georgian times right through to the 20th century, slate was extensively used because it was the most abundant, easily obtainable and cheap.

In Victorian times, some enterprising roofers came up with new ideas for laying slates and shaping them to improve upon the boring old squares. This included laying them diagonally which required only one nail to fix them (practiced mostly in Sussex). A development of this, only in Surrey as far as I can make out, was the 'tear drop' slate tile which again only required one nail to fix. A good example of this can be

seen at the two gate lodges, built in 1790, at the entrance to the drive (now lined with houses) to 'Bellassis', a large mansion nestling on the edge of Headley Heath. I asked the present owner of the West Lodge, "If you had to replace one or two of the tiles, where would you get them?". He told me that he had made a wooden template and shaped a few for himself and his neighbour in the East Lodge "just in case".

The East Lodge on Box Hill



Picture by Hank Etheridge



The Victorians, bedazzled by the mythic King Arthur and apocryphal tales of the real King Alfred, came up with other ideas for roofs as can be seen by my picture above, though they continued with 'Ye Olde' thatching in the rural areas.

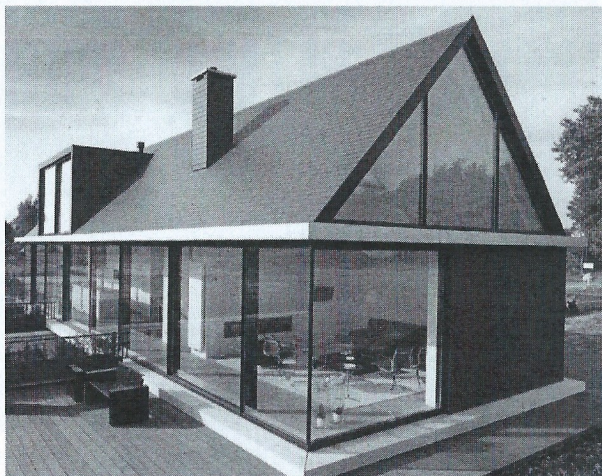
It was only when Lutyens and other more contemporary Architects came along in the late 19th and early 20th centuries that the Victorian obsession with the architecture of the medieval past fizzled out, although there are regrettable vestiges of it still around in the 21st.

Pictures by Hank Etheridge

THE FUTURE

With the need to make Houses more 'Carbon Efficient', fibre cement tiles are ideal. They are vapour permeable but also waterproof. They come in many colours and styles, ideal for vernacular Housing. Illustrated is a private House in Geldrop, Holland

Picture- courtesy of Marley Internet



as the good book reminds us..
**"To everything there
 is a season...
 a time to plant..."**

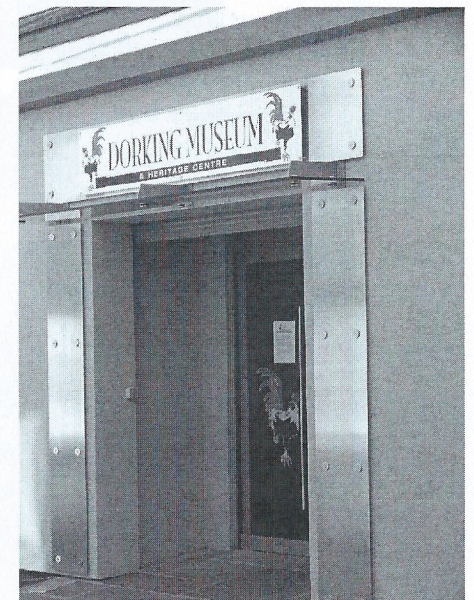
by Nigel Arch,
 Chairman of the DDPS Museum

Well, now is the time to plant the exhibition in Dorking's Museum! The months – indeed years – of planning are at an end and the objects and graphics must now be displayed to tell the story of Dorking and its surrounding district. I know, from years of experience, that this is one of the most critical times in the evolution of a museum display. The team doing it rely not only on one another but on many external suppliers and contractors. Inevitably things go wrong and there are delays – all of which have

to be, in some way, anticipated when setting the opening date. Meanwhile, there is a Budget, and a careful eye has to be kept on that too.

I am pleased to be able to report that the exhibition team – all volunteers remember – are working literally day and night to get everything ready for a 'soft' opening at the end of the month, or thereabouts, with a more formal occasion planned for November.

What then will you see when



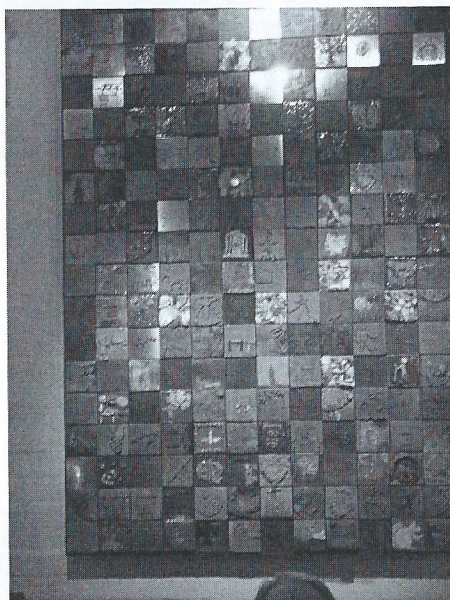
you come along to the Museum, which now proudly boasts its external signage, clearly visible from West Street?

It is the extraordinary and fascinating story of Dorking and its surrounding district which will be told through the medium of a wonderful collection of objects which has been built up over the years,

thanks to the far-sightedness and generosity of many individuals. There is the story of pre-historic Dorking when iguanodons roamed the countryside, one of them leaving its tail behind for you to see, as well as drawers full of fossils to discover. There are arrow heads, possibly of Anglo Saxon provenance; trade tokens from the middle ages, and do not forget to pay homage to the Dorking cockerel, which reminds us that our town was once one of the greatest poultry markets in the country. Dorking's long political history is not ignored either – remember that William Mullins, the Merchant Adventurer who sailed on the Mayflower, was once a resident of Dorking, the town that also played its part in the struggle for women's suffrage in the last century. Our Wedgwood connection is also remembered through a splendid collection of their ceramics donated by Sir Martin and Lady Wedgwood, and do not forget the lives of Vaughan Williams, Laurence Olivier, Clement Atlee, Fanny

Burney, Thomas Hope and others who impacted on the town and countryside. There is much more: Dorking at war, the town as a tourist centre, but you should come along and discover everything for yourselves.

Remember. We cannot open anything unless we have our volunteer Visitor Assistants to bring everything to life. It's not too late to join up!



*Above right: The DDFAS display
Below: Funeral bier from Dorking Cemetery*

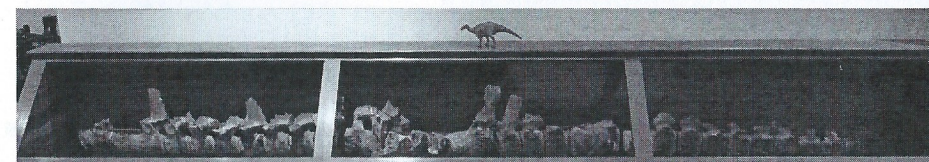
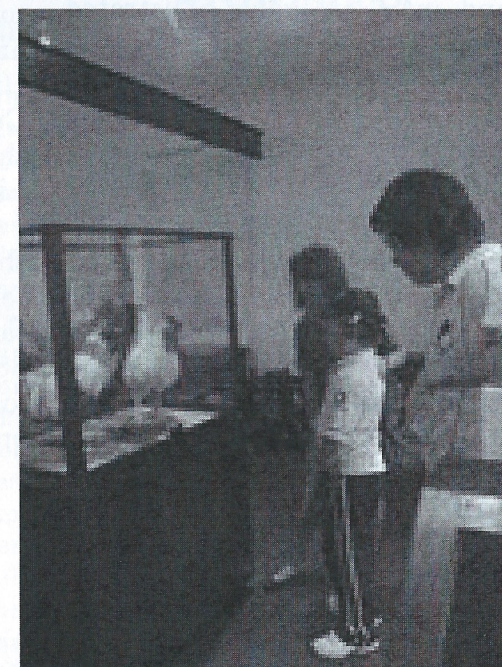


Top: The Penny Farthing display is finalised

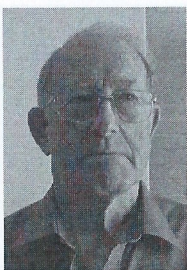
Above: A bracelet charm containing mini pictures of Dorking

Right: Admiring the iconic Dorking cockerel

Below: The iguanodon tail



Dorking Local History Group



The Group's regular monthly meetings have continued to attract very good support.

The last meeting was a "walk and talk" organised by Peter Bennett for our members.

Peter produced an excellent and most enjoyable illustrated event around the old Bury Hill estate – mainly the area covered by Milton Street. In fact we received refreshments from Peter and his wife half-way round the tour – they live in one of the houses on Milton Street.

Our next talk on Tuesday, 2nd October will be by Linda Heath on Emma Darwin at the Friends' Meeting House, Butter Hill, Dorking (opposite Waitrose). Starting at 7.30pm – visitors are always welcome.

Christine Thom has very kindly offered – and we have gratefully accepted – to produce the winter meetings' programme for the next six months. We were without an organiser for the meetings.

However, one of our members has suggested that they

would consider filling this vacancy starting with our summer programme.

There is still a vacancy for Outings – normally one for the summer and one for the winter. Katie Mackay had arranged the summer outing to Buckingham Palace before retiring as Outings organiser. The event was sold out very quickly and was a great success.

We are looking forward to the opening of the museum as we hope it will encourage visitors to join the History Group and also increase our sales of History Group publications. Currently we are selling these through Waterstones and the Library.

If you are not a member of the History Group and are interested in joining, please contact Peter Camp on 01306 888123 or collect an application form from the museum – when open.

Peter Camp

NEWS & VIEWS

WELCOME

Cllr. Paul Elderton

Mr K. Jacobs

Mr & Mrs G. R. Smith

New members of the Society

WATCH OUT – THERE'S A THIEF ABOUT

Recently, both my daughter, who lives in Oxford, and I, experienced unrelated computer scams. Someone saying that they were from Microsoft telephoned me and said that they had discovered a fault on my lap-top. To find it, the voice said, I should enter in my password and he could sort it out. I told him that my laptop was switched off and that I hadn't used it for weeks. "How can you tell there is something wrong?". The telephone went dead. When I related this to my local expert, he told me that there is no way anyone can detect a 'fault' in this way. He went on to say that he was aware of this scam that required people to put in private details and pay them £150 to repair a fault that didn't exist in the first place.

My daughter's experience was quite different. She received an e-

mail saying that her daughter on holiday in Spain had lost her money and had asked the sender to contact her mother and ask her to transfer money to an account which the sender would then draw out and give to her daughter. Fortunately, my daughter's daughter was staying with her at the time so the e-mail was recognized for what it was – a Scam! Be aware that there are criminals out there looking to fleece you. Be ultra careful about what details you give either on the telephone or on the Internet.

STOP PRESS

HOPE SPRINGS ETERNAL-

The Deepdene Trail

Regular readers may be aware that Mole Valley District Council had submitted a Heritage Lottery bid for £2m in March. The project is to restore the Hope mausoleum and its surrounding landscape and to link up the remaining remnants of the Deepdene through a circular walk starting at Dorking, taking in Glory Woods, Chart Park, Deepdene Terrace, and access to the privately owned, Grade II, listed Deepdene Gardens, then to Betchworth Park, and on to Brockham village.

The Heritage Lottery Fund unfortunately narrowly turned down the project although they really liked the bid. They indicated that they would welcome a resubmission of a revised, smaller bid. If you would like further detail's, e-mail: Alexander.bagnall@molevalley.gov.uk.

Young arts Museum project

by Sue Tatham

A piece of decorative art has been made especially for the newly refurbished Dorking Museum by the schoolchildren of Dorking. The Dorking Decorative and Fine Arts Society (DDFAS) sponsored this artwork, on the theme of 'Dorking Past and Present'. Local ceramicist Penny Green was commissioned to design the work and to supervise the making of the tiles.

This was a 'Young Arts' project with the aim of involving young people in creative arts activities, so that they might develop an enthusiasm for the arts and an awareness of art heritage and its

conservation. Such was the enthusiasm for this museum project that all five primary schools and the Ashcombe, Priory, Starhurst and Box Hill Secondary Schools participated. Penny Green held workshops where groups of children prepared tiles using a variety of materials and processes. An Ideas Folder, with photographs of Dorking landmarks, buildings, signs and architectural features as well as information about local historic events was provided for each group, but each child chose his/her own topic and design. The outcome ranges from fossils to the Olympic torch.

The wall panel contains 273 tiles: unglazed, glazed and smoked terracotta, etched metal and flint mosaic. Every tile that was made has been used in this artwork. It is



hoped that the children will feel that they have a stake in the new museum and will visit it with their families and, as a result, discover all the other interesting things it has to offer.

Previous page: Ceramicist, Penny Green, supervising a tile-making workshop.

Left, Top: The Dorking cockerel – an example of a smoked tile.



Middle: St. Paul's church steeple – etched metal.

Bottom: Painted & glazed Roman snail.

Below: At St. Martin's, children painted their tiles before glazing and re-firing.



DDFAS is a member of the National Association of Decorative and Fine Arts Societies (NADFAS) which works to advance decorative and fine arts education and appreciation, and to promote the preservation of artistic heritage. NADFAS, founded in 1968, has over 90,000 members. It is a UK-based charity which supports a network of more than 360 local societies across the country and in mainland Europe and Australasia. NADFAS also awards grants and bursaries to art students and art-based projects.

Local societies such as DDFAS are autonomous organisations. The 340 members of DDFAS enjoy a

Right: Priory pupils make flint mosaics.

Below: Preparing tiles for smoking at a Powell Corderoy workshop



programme of lectures, visits and tours – all with the remit of arts education and conservation. In addition to Young Arts activities, groups of DDFAS members are involved in Church Recording and Heritage Volunteering.

Church Recorders select a local church to research. All its memori-



als, metalwork, stonework, woodwork, textiles, paintings, windows, library and other items are described, dated and photographed. It takes about three years to complete a Church record, which is then presented to the church; additional copies are lodged with other relevant bodies such as the County Records Office, V&A Museum and English Heritage. To date, Dorking Church Recorders have completed records of the Parish churches in Wotton, Mickleham, Betchworth, Abinger, Holmbury St. Mary, Westcott and Ranmore, as well as St. John's Chapel, Westcott. The record of Pixham church is nearly complete and the group is currently working on St. Martin's.

DDFAS does not have a separate group of Heritage Volunteers, but several of our members are currently involved in the NADFAS Area project to make period costumes for Polesden Lacey. Herein lies the potential to continue DDFAS's successful collaboration with Dorking Museum by providing volunteers to assist with future museum activities.

A pupil at St. Joseph's taking great care with his design – a five-toed chicken's foot



BETCHWORTH CASTLE LECTURE

Thursday, November 22 2012

As part of its Winter Lecture Series, The Society for the Protection of Ancient Buildings (SPAB) is hosting a lecture on Thursday, November 22, by Martin Higgins, about Betchworth Castle's distant and more recent history, and about his plans to repair the ruin and make it accessible to the public, following his purchase from Mole Valley District Council for £1 in 2008.

The lecture will take place at 18.15 for 18.30 (6.15pm for 6.30pm) at Botolph's Hall, Bishopsgate, London EC2M 3TL, (near Liverpool Street Station) and will be followed by an informal wine reception.

Members of DDPS are invited to attend the lecture at the SPAD members' rate of £7.

If any member would like to attend, please apply for ticket(s) to SPAD at its offices at 37 Spital Square, London E1 6DY with a cheque for £7 per ticket.





"Welcome to New England Brother Jones: I see you have already met Master Mullins."

EXPERIENCED, RELIABLE & INSURED

HANDYMAN

References available

- Professional Maintenance & Repairs
- Exterior & interior decoration
- One off jobs or termed Contracts
- Property Security while you are on vacation



Service covers Dorking & surrounding villages. Special terms for disabled

Call Kenneth Jacobs on:
01737 842839 8am – 9pm

CORPORATE MEMBERS SUPPORTING THE SOCIETY

Please note that all addresses are of Dorking town and all telephone numbers have the code 01306 unless shown otherwise.

<u>Name</u>	<u>Address</u>	<u>Tel.</u>	<u>Business type</u>
ADV (UK) Ltd	The Old Crummet Factory, 16 Brockham Lane, Betchworth, RH3 7EL	01737 845 450	Building Preservation & Construction
Antony Wakefield & Co Ltd.	Suite C, South House, South St RH4 2JZ	740 555	Fine Art & general insurance brokers
Betchworth Park Golf Club	Reigate Road, RH4 1NZ	882 052	Golf club
Bray Estates	278/280 High Street, RH4 1QT	740 837	Professional property consultants
Bullimore's	Old Printers Yard, 156 South Street, RH4 2HF	880 880	Chartered accountants
Burley, G & Sons	Burley Corner, Moorhurst Lane, S.Holmwood, RH5 4LJ	711 799	Amenity horticulturist
Carrington (1953) Ltd	5 Stacey's Meadow, Elstead, Godalming, GU8 6BX		
Christique Antique Centre	11 West Street, RH4 1BL	883 849	Antique furniture & interior design
Clear, S J & Co Ltd	65 High Street, RH4 1AW	883 340	Electrical contractors/shop
David Cowan	114 South Street, RH4 1AW	886 622	Solicitors
Dorking Desk Shop, The Downs	41 West Street, RH4 1BN	883 327	Antique furniture dealer
Downsman Ltd	156 High Street, RH4 1BQ	880 110	Solicitors and notaries
Ellis Atkins & Co	Overdene, Paper Mews, RH4 2TU	887 023	Management services
	1 Paper Mews, 330 High Street, RH4 2TU	886 681	Chartered accountants
Fothergills Coffee Lounge	19 St Martins Walk, RH4 1UT		Coffee lounge
Friends Provident plc	Pixham End, RH4 1QA	654 4220	Financial services
Garth House Nursing Home	Tower Hill Road, RH4 2AY	880 511	Nursing home
Hart Scales & Hodges	159 High Street, RH4 1AD	884 432	Solicitors
International Sports Marketing Ltd	Bales Court, Barrington Road, RH4 3EJ	743 322	Marketing consultants
Kenneth Jacobs	Box Hill	01737 842 839	Insured Handyman
Kuoni Travel Ltd	Deepdene Avenue, RH5 4AZ	840 888	Tour operators
Munro, Ian	10 High Street, RH4 1AT	882 270	Men's outfitters
Newton & Co	Ranmore House, 19 Ranmore Road, RH4 1HE	884 208	Chartered accountants
Patrick Gardner & Co	171 High Street, RH4 1AD	877 775	Estate agents
Penwizard Ltd	Dene Lodge, Cotmandene, RH4 2BN		
Priory School, The	West Bank, RH4 3DG	887 337	School
Rose Hill Nursing Home	9 Rose Hill, RH4 2EG	882 622	Nursing home
Sears, Philip, Designs	18c Horsham Road, RH4 2JD	884 477	Architectural building surveyor
Songhurst, W Ltd	Rayleigh House, Chapel Lane, Westcott, RH4 3PJ	880 411	Builders
Treeline Services Ltd	Chadhurst Farm, Coldharbour Lane, RH4 3JH	741 800	Tree care and maintenance
Uden, C J & Co	The Old Crummet Factory, 16 Brockham Lane, Betchworth, RH3 7EL	01737 845 451	Building Preservation & Construction
Viscount Agencies	Concept House, 3 Dene Street, RH4 2DR	880 715	Duty free agency
Whitelegg Machines Ltd	Fir Tree House, Horsham Road, Beare Green, RH5 4LQ	713 200	Electrical engineers
Woolcock Partnership Ltd, The	Hulsta Studios, 120 South Street, RH4 2EU	880 330	Furniture retailer and installation
Wyevale Country Gardens	Reigate Road, RH5 1NP	884 845	Garden centre

OTHER CORPORATE MEMBERS SUPPORTING THE SOCIETY

Abinger Parish Council	Dorking Town Centre Management	Newdigate Parish Council
Amis de Gouvieux, Les	Friends of Boxhill	Ockley Parish Council
Ashcombe School	Friends of Gouvieux	Sir Paul Beresford MP & Lady Beresford
Betchworth Parish Council	Friends of Holmwood	The Dorking Advertiser
Brockham Green Village Society	Headley Parish Council	The Guildford Society
Brockham Parish Council	Holmwood Parish Council	The Reigate Society
Buckland Parish Council	Leigh Parish Council	The Surrey Advertiser
Capel Parish Council	Mickleham Parish Council	Westcott Village Association
Charlwood Parish Council	Mole Valley District Council	Wotton Parish Council
Coldharbour Sports and Social Club		

Published by the

DORKING & DISTRICT PRESERVATION SOCIETY

Design: HE Assoc. Typesetting: Capricorn Wordprocessing Bureau. Printing: Netherne, Dorking

BRAYESTATES

PROFESSIONAL PROPERTY CONSULTANTS

Commercial Property Agency
Property Management
Investment Opportunities
Surveys & Valuations

www.brayestates.co.uk

263 High Street, Dorking, Surrey RH14 1RL

Tel: 01306 740837 office@brayestates.co.uk

MICHAEL BRAY

& ASSOCIATES

CHARTERED SURVEYORS



www.mbsurveyors.co.uk

Tel: 01306 743347 office@mbsurveyors.co.uk